

For Research Use Only

SPARC Recombinant antibody, PBS Only (Capture)

Catalog Number: 84621-1-PBS



Basic Information

Catalog Number: 84621-1-PBS	GenBank Accession Number: NM_003118.4	Purification Method: Protein A purification
Size: 100ug, Concentration: 1 mg/ml by Nanodrop;	GeneID (NCBI): 6678	CloneNo.: 241952A12
Source: Rabbit	UNIPROT ID: P09486	
Isotype: IgG	Full Name: secreted protein, acidic, cysteine-rich (osteonectin)	
	Calculated MW: 35kDa	

Applications

Tested Applications:
Cytometric bead array, Sandwich ELISA, Indirect ELISA,
Sample test

Species Specificity:
human

Product Information

84621-1-PBS targets SPARC as part of a matched antibody pair:

MP01430-1: 84621-1-PBS capture and 84621-2-PBS detection (validated in Cytometric bead array)

MP01430-2: 84621-1-PBS capture and 84621-3-PBS detection (validated in Cytometric bead array, Sandwich ELISA)

Unconjugated rabbit recombinant monoclonal antibody in PBS only (BSA and azide free) storage buffer at a concentration of 1 mg/mL, ready for conjugation. Created using Proteintech's proprietary in-house recombinant technology. Recombinant production enables unrivalled batch-to-batch consistency, easy scale-up, and future security of supply.

This conjugation ready format makes antibodies ideal for use in many applications including: ELISAs, multiplex assays requiring matched pairs, mass cytometry, and multiplex imaging applications. Antibody use should be optimized by the end user for each application and assay.

Storage

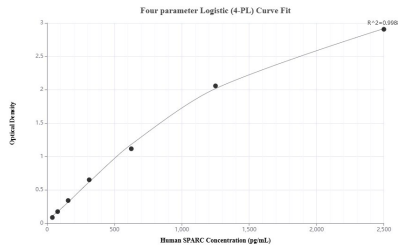
Storage:
Store at -80°C.

Storage Buffer:
PBS Only

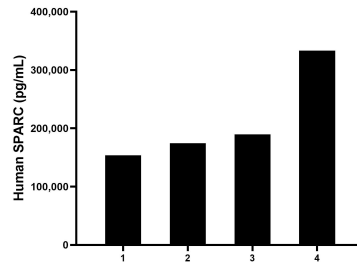
For technical support and original validation data for this product please contact:
T: 1 (888) 4PTGLAB (1-888-478-4522) (toll free in USA), or 1(312) 455-8498 (outside USA) E: proteintech@ptglab.com
W: ptglab.com

This product is exclusively available under Proteintech Group brand and is not available to purchase from any other manufacturer.

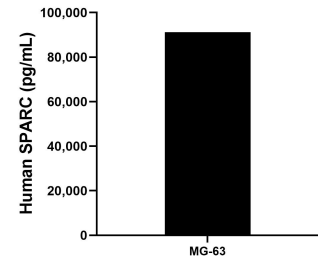
Selected Validation Data



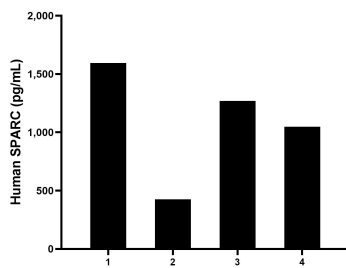
Sandwich ELISA standard curve of MP01430-2, Human SPARC Recombinant Matched Antibody Pair - PBS only. 84621-1-PBS was coated to a plate as the capture antibody and incubated with serial dilutions of standard Eg1169. 84621-3-PBS was HRP conjugated as the detection antibody. Range: 39.1-1250 pg/mL



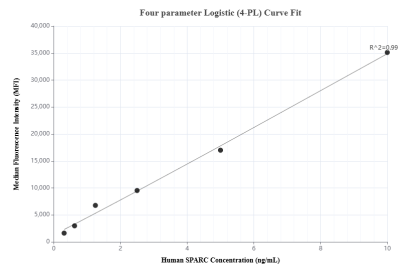
Serum of four healthy human donors was measured. The human SPARC concentration of detected samples was determined to be 212,811.0 pg/mL with a range of 153,761.1 - 333,381.8 pg/mL



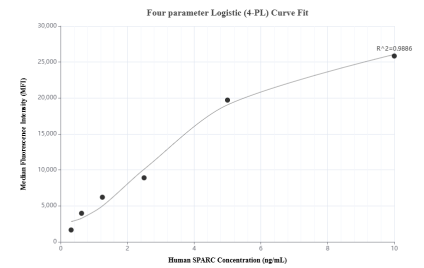
MG-63 cells were cultured in DMEM supplemented with 10% fetal bovine serum. An aliquot of the cell culture supernate was removed, assayed for human SPARC, and measured 91,240.8 pg/mL



Human milk of four healthy human donors was measured. The human SPARC concentration of detected samples was determined to be 1,084.0 pg/mL with a range of 425.0 - 1,594.2 pg/mL



Cytometric bead array standard curve of MP01430-1, SPARC Recombinant Matched Antibody Pair, PBS Only. Capture antibody: 84621-1-PBS. Detection antibody: 84621-2-PBS. Standard: Eg1169. Range: 0.313-10 ng/mL



Cytometric bead array standard curve of MP01430-2, SPARC Recombinant Matched Antibody Pair, PBS Only. Capture antibody: 84621-1-PBS. Detection antibody: 84621-3-PBS. Standard: Eg1169. Range: 0.313-10 ng/mL