

For Research Use Only

INTS6 Recombinant antibody

Catalog Number: 84610-1-RR



Basic Information

| | | |
|--|---|--|
| Catalog Number: 84610-1-RR | GenBank Accession Number: BC039829 | Purification Method: Protein A purification |
| Size: 100ul , Concentration: 1000 ug/ml by Nanodrop; | GeneID (NCBI): 26512 | CloneNo.: 242099C7 |
| Source: Rabbit | UNIPROT ID: Q9UL03 | Recommended Dilutions: WB 1:1000-1:8000 IF/ICC 1:250-1:1000 |
| Isotype: IgG | Full Name: integrator complex subunit 6 | |
| Immunogen Catalog Number: AG36146 | Calculated MW: 100 kDa | |
| | Observed MW: 130 kDa | |

Applications

| | |
|--|--|
| Tested Applications: WB, IF/ICC, ELISA | Positive Controls: WB : PC-3 cells, DU 145 cells, HuH-7 cells, MCF-7 cells IF/ICC : HeLa cells, |
| Species Specificity: human | |

Background Information

INTS6 is a component of the Integrator (INT) complex, a complex involved in the small nuclear RNAs (snRNA) U1 and U2 transcription and in their 3'-box-dependent processing.

Storage

Storage:
Store at -20°C. Stable for one year after shipment.
Storage Buffer:
PBS with 0.02% sodium azide and 50% glycerol pH 7.3.
Aliquoting is unnecessary for -20°C storage

***** 20ul sizes contain 0.1% BSA**

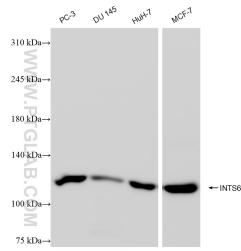
For technical support and original validation data for this product please contact:

T: 1 (888) 4PTGLAB (1-888-478-4522) (toll free in USA), or 1(312) 455-8498 (outside USA)

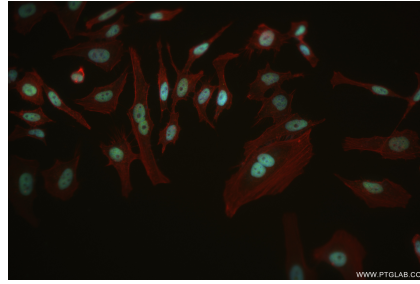
E: proteintech@ptglab.com
W: ptglab.com

This product is exclusively available under Proteintech Group brand and is not available to purchase from any other manufacturer.

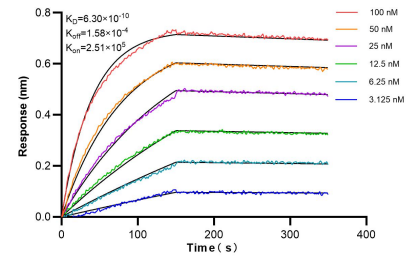
Selected Validation Data



Various lysates were subjected to SDS PAGE followed by western blot with 84610-1-RR (INTS6 antibody) at dilution of 1:4000 incubated at room temperature for 1.5 hours.



Immunofluorescent analysis of (4% PFA) fixed HeLa cells using INTS6 antibody (84610-1-RR, Clone: 242099C7) at dilution of 1:500 and CoraLite® 488-Conjugated Goat Anti-Rabbit IgG(H+L) (SA00013-2), CL594-Phalloidin (red).



Biolayer interferometry (BLI) kinetic assays of 84610-1-RR against Human INTS6 were performed. The affinity constant is 0.63 nM.