

For Research Use Only

INTS6 Recombinant antibody, PBS Only (Detector)

Catalog Number: 84610-1-PBS



Basic Information

Catalog Number: 84610-1-PBS	GenBank Accession Number: BC039829	Purification Method: Protein A purification
Size: 100ug , Concentration: 1 mg/ml by Nanodrop;	GeneID (NCBI): 26512	CloneNo.: 242099C7
Source: Rabbit	UNIPROT ID: Q9UL03	
Isotype: IgG	Full Name: integrator complex subunit 6	
Immunogen Catalog Number: AG36146	Calculated MW: 100 kDa	
	Observed MW: 130 kDa	

Applications

Tested Applications:
WB, IF/ICC, Cytometric bead array, Sandwich ELISA, Indirect ELISA, Sample test

Species Specificity:
human

Product Information

84610-1-PBS targets INTS6 as part of a matched antibody pair:

MP01446-1: 84610-3-PBS capture and 84610-1-PBS detection (validated in Cytometric bead array, Sandwich ELISA)

Unconjugated rabbit recombinant monoclonal antibody in PBS only (BSA and azide free) storage buffer at a concentration of 1 mg/mL, ready for conjugation. Created using Proteintech's proprietary in-house recombinant technology. Recombinant production enables unrivalled batch-to-batch consistency, easy scale-up, and future security of supply.

This conjugation ready format makes antibodies ideal for use in many applications including: ELISAs, multiplex assays requiring matched pairs, mass cytometry, and multiplex imaging applications. Antibody use should be optimized by the end user for each application and assay.

Background Information

INTS6 is a component of the Integrator (INT) complex, a complex involved in the small nuclear RNAs (snRNA) U1 and U2 transcription and in their 3'-box-dependent processing.

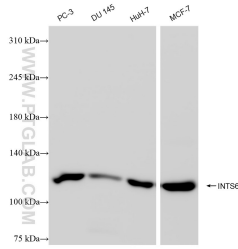
Storage

Storage:
Store at -80°C.
Storage Buffer:
PBS Only

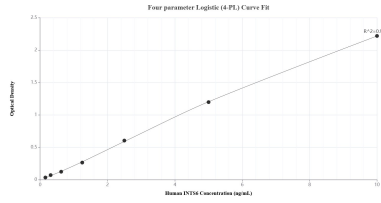
For technical support and original validation data for this product please contact:
T: 1 (888) 4PTGLAB (1-888-478-4522) (toll free in USA), or 1(312) 455-8498 (outside USA) E: proteintech@ptglab.com W: ptglab.com

This product is exclusively available under Proteintech Group brand and is not available to purchase from any other manufacturer.

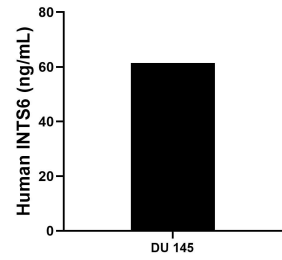
Selected Validation Data



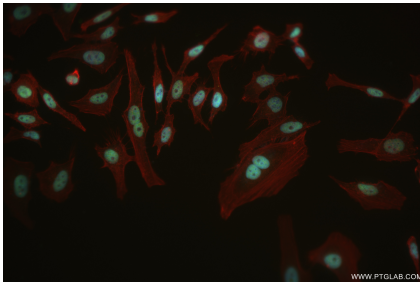
Various lysates were subjected to SDS PAGE followed by western blot with 84610-1-RR (INTS6 antibody) at dilution of 1:4000 incubated at room temperature for 1.5 hours. This data was developed using the same antibody clone with 84610-1-PBS in a different storage buffer formulation.



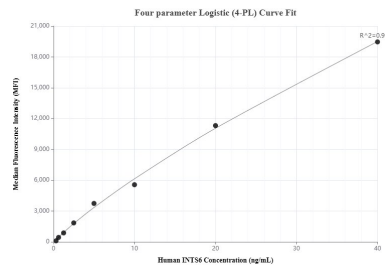
Sandwich ELISA standard curve of MP01446-1, Human INTS6 Recombinant Matched Antibody Pair - PBS only. 84610-3-PBS was coated to a plate as the capture antibody and incubated with serial dilutions of standard Ag36146. 84610-1-PBS was HRP conjugated as the detection antibody. Range: 0.156-10 ng/mL



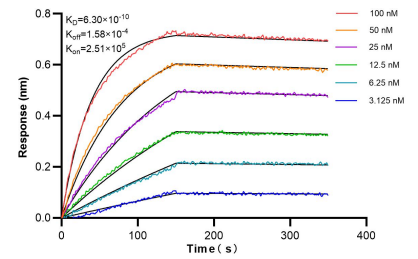
The mean INTS6 concentration was determined to be 61.44 ng/mL in DU 145 cell extract based on a 1.00 mg/mL extract load.



Immunofluorescent analysis of (4% PFA) fixed HeLa cells using INTS6 antibody (84610-1-RR, Clone: 242099C7) at dilution of 1:500 and CoraLite@488-Conjugated Goat Anti-Rabbit IgG(H+L) (SA00013-2), CL594-Phalloidin (red). This data was developed using the same antibody clone with 84610-1-PBS in a different storage buffer formulation.



Cytometric bead array standard curve of MP01446-1, INTS6 Recombinant Matched Antibody Pair, PBS Only. Capture antibody: 84610-3-PBS. Detection antibody: 84610-1-PBS. Standard: Ag36146. Range: 0.313-40 ng/mL



Biolayer interferometry (BLI) kinetic assays of 84610-1-RR against Human INTS6 were performed. The affinity constant is 0.63 nM.