

For Research Use Only

# CD46 Recombinant antibody, PBS Only (Capture)

Catalog Number: 84599-1-PBS



## Basic Information

<b>Catalog Number:</b> 84599-1-PBS	<b>GenBank Accession Number:</b> NM_172351.3	<b>Purification Method:</b> Protein A purification
<b>Size:</b> 100ug, Concentration: 1 mg/ml by Nanodrop;	<b>GeneID (NCBI):</b> 4179	<b>CloneNo.:</b> 241764A11
<b>Source:</b> Rabbit	<b>UNIPROT ID:</b> P15529-11	
<b>Isotype:</b> IgG	<b>Full Name:</b> CD46 molecule, complement regulatory protein	
	<b>Calculated MW:</b> 42kDa	

## Applications

**Tested Applications:**  
Cytometric bead array, Sandwich ELISA, Indirect ELISA, Sample test

**Species Specificity:**  
human

## Product Information

84599-1-PBS targets CD46 as part of a matched antibody pair:

MP01445-2: 84599-1-PBS capture and 84599-4-PBS detection (validated in Cytometric bead array)

MP01445-3: 84599-1-PBS capture and 84599-6-PBS detection (validated in Sandwich ELISA)

Unconjugated rabbit recombinant monoclonal antibody in PBS only (BSA and azide free) storage buffer at a concentration of 1 mg/mL, ready for conjugation. Created using Proteintech's proprietary in-house recombinant technology. Recombinant production enables unrivalled batch-to-batch consistency, easy scale-up, and future security of supply.

This conjugation ready format makes antibodies ideal for use in many applications including: ELISAs, multiplex assays requiring matched pairs, mass cytometry, and multiplex imaging applications. Antibody use should be optimized by the end user for each application and assay.

## Storage

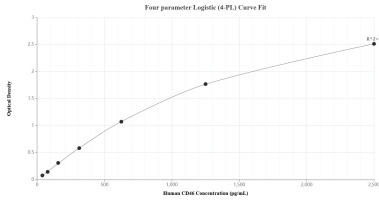
**Storage:**  
Store at -80°C.

**Storage Buffer:**  
PBS Only

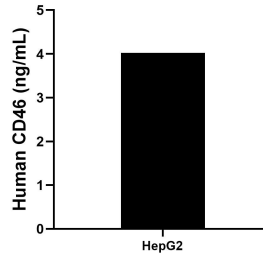
For technical support and original validation data for this product please contact:  
T: 1 (888) 4PTGLAB (1-888-478-4522) (toll free in USA), or 1(312) 455-8498 (outside USA)      E: proteintech@ptglab.com  
W: ptglab.com

This product is exclusively available under Proteintech Group brand and is not available to purchase from any other manufacturer.

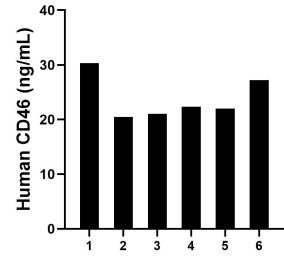
## Selected Validation Data



Sandwich ELISA standard curve of MP01445-3, Human CD46 Recombinant Matched Antibody Pair - PBS only. 84599-1-PBS was coated to a plate as the capture antibody and incubated with serial dilutions of standard Eg1770. 84599-6-PBS was HRP conjugated as the detection antibody. Range: 39.1-2500 pg/mL



HepG2 cells were cultured in DMEM supplemented with 10% fetal bovine serum, 2.5 mM L-glutamine, 100 U/mL penicillin, and 100 µg/mL streptomycin sulfate. An aliquot of the cell culture supernatant was removed, assayed for human CD46, and measured 4.0 ng/mL



Serum of six individual healthy human donors was measured. The CD46 concentration of detected samples was determined to be 23.9 ng/mL with a range of 20.5-30.3 ng/mL



Cytometric bead array standard curve of MP01445-2, CD46 Recombinant Matched Antibody Pair, PBS Only. Capture antibody: 84599-1-PBS. Detection antibody: 84599-4-PBS. Standard: Eg1770. Range: 0.469-60 ng/mL