

For Research Use Only

PLTP Recombinant antibody, PBS Only

Catalog Number: 84592-1-PBS



Basic Information

Catalog Number: 84592-1-PBS	GenBank Accession Number: BC005045	Purification Method: Protein A purification
Size: 100ug , Concentration: 1 mg/ml by Nanodrop;	GeneID (NCBI): 5360	CloneNo.: 241583F3
Source: Rabbit	UNIPROT ID: P55058	
Isotype: IgG	Full Name: phospholipid transfer protein	
Immunogen Catalog Number: AG8171	Calculated MW: 493 aa, 55 kDa	
	Observed MW: 55 kDa	

Applications

Tested Applications:
WB, IHC, Indirect ELISA

Species Specificity:
human, mouse, rat

Background Information

PLTP (phospholipid transfer protein) belongs to the family of lipid-binding and lipid-transfer proteins. PLTP is involved in the distribution and metabolism of high-density lipoprotein (HDL) and reverse cholesterol transfer (RCT). In plasma, PLTP catalyzes the transfer of phospholipids (mainly phosphatidylcholine) between lipoproteins (PMID: 29558025). PLTP has a predicted protein molecular mass of approximately 55 kDa, and molecular weights of 70-80 kDa can also be detected in some literature (PMID: 26160914; 36312255; 29680823; 15342679; 7654777).

Storage

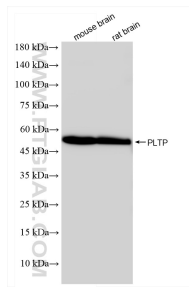
Storage:
Store at -80°C.

Storage Buffer:
PBS Only

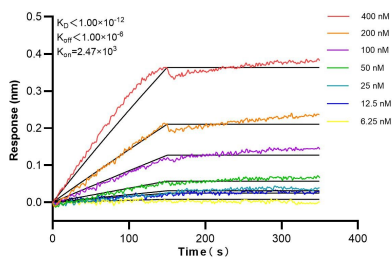
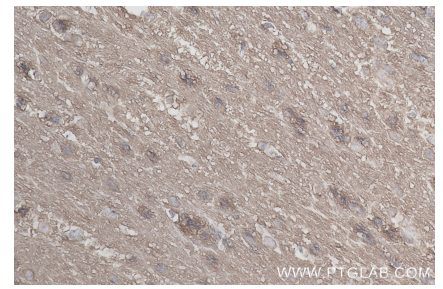
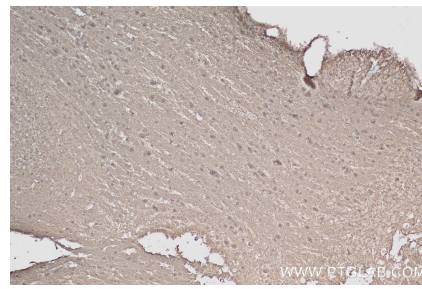
For technical support and original validation data for this product please contact:
T: 1 (888) 4PTGLAB (1-888-478-4522) (toll free in USA), or 1(312) 455-8498 (outside USA)
E: proteintech@ptglab.com
W: ptglab.com

This product is exclusively available under Proteintech Group brand and is not available to purchase from any other manufacturer.

Selected Validation Data



Various lysates were subjected to SDS PAGE followed by western blot with 84592-1-RR (PLTP antibody) at dilution of 1:10000 incubated at room temperature for 1.5 hours. This data was developed using the same antibody clone with 84592-1-PBS in a different storage buffer formulation.



Biolayer interferometry (BLI) kinetic assays of 84592-1-RR against Human PLTP were performed. The affinity constant is below 1 pM.