

For Research Use Only

RHBDL2 Recombinant antibody, PBS Only

Catalog Number: 84589-1-PBS



Basic Information

Catalog Number: 84589-1-PBS	GenBank Accession Number: BC013103	Purification Method: Protein A purification
Size: 100ug, Concentration: 1 mg/ml by Nanodrop;	GeneID (NCBI): 54933	CloneNo.: 240446D11
Source: Rabbit	UNIPROT ID: Q9NX52	
Isotype: IgG	Full Name: rhomboid, veinlet-like 2 (Drosophila)	
Immunogen Catalog Number: AG3142	Calculated MW: 303 aa, 34 kDa	
	Observed MW: 34-37 kDa	

Applications

Tested Applications:
WB, Indirect ELISA

Species Specificity:
human

Storage

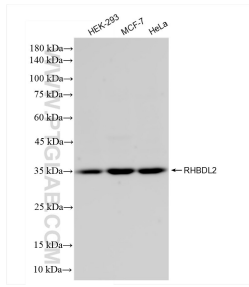
Storage:
Store at -80°C.

Storage Buffer:
PBS Only

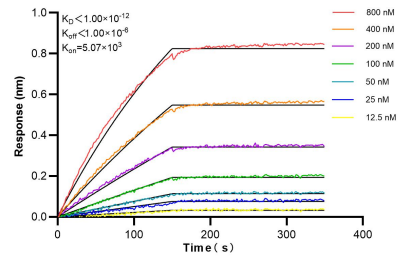
For technical support and original validation data for this product please contact:
T: 1 (888) 4PTGLAB (1-888-478-4522) (toll free in USA), or 1(312) 455-8498 (outside USA) E: proteintech@ptglab.com
W: ptglab.com

This product is exclusively available under Proteintech Group brand and is not available to purchase from any other manufacturer.

Selected Validation Data



Various lysates were subjected to SDS PAGE followed by western blot with 84589-1-RR (RHBDL2 antibody) at dilution of 1:1000 incubated at room temperature for 1.5 hours. This data was developed using the same antibody clone with 84589-1-PBS in a different storage buffer formulation.



Biolayer interferometry (BLI) kinetic assays of 84589-1-RR against Human RHBDL2 were performed. The affinity constant is below 1 pM.