

For Research Use Only

TRAF2 Recombinant antibody

Catalog Number: 84581-3-RR



Basic Information

Catalog Number: 84581-3-RR	GenBank Accession Number: BC032410	Purification Method: Protein A purification
Size: 100ul, Concentration: 1000 µg/ml by Nanodrop;	GeneID (NCBI): 7186	CloneNo.: 241899A2
Source: Rabbit	UNIPROT ID: Q12933	Recommended Dilutions: WB 1:2000-1:10000 IHC 1:50-1:500 IF/ICC 1:125-1:500
Isotype: IgG	Full Name: TNF receptor-associated factor 2	
Immunogen Catalog Number: AG25387	Calculated MW: 56 kDa	
	Observed MW: 53 kDa	

Applications

Tested Applications:
WB, IHC, IF/ICC, FC (Intra), ELISA

Species Specificity:
human, mouse

Note-IHC: suggested antigen retrieval with TE buffer pH 9.0; (*) Alternatively, antigen retrieval may be performed with citrate buffer pH 6.0

Positive Controls:

WB: HeLa cells, HEK-293T cells, HepG2 cells, MOLT-4 cells, NIH/3T3 cells, C2C12 cells

IHC: human ovary cancer tissue, human rectal cancer tissue

IF/ICC: HeLa cells,

Background Information

Tumor necrosis factor (TNF) receptor-associated factor-2 (TRAF2) is one of the members of the TRAF superfamily protein, which is an intracellular junction protein with E3 ligase activity. TRAF2 mediates and regulates the activation of nuclear factor kappa B (NF-κB) and microtubule-associated protein kinase (MAPK) signaling pathways by binding to TNFR family proteins. Recent studies have demonstrated that TRAF2 regulates tumor progression by through multiple pathways.

Storage

Storage:
Store at -20°C. Stable for one year after shipment.
Storage Buffer:
PBS with 0.02% sodium azide and 50% glycerol pH 7.3.
Aliquoting is unnecessary for -20°C storage

***** 20ul sizes contain 0.1% BSA**

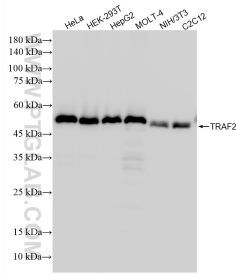
For technical support and original validation data for this product please contact:

T: 1 (888) 4PTGLAB (1-888-478-4522) (toll free in USA), or 1(312) 455-8498 (outside USA)

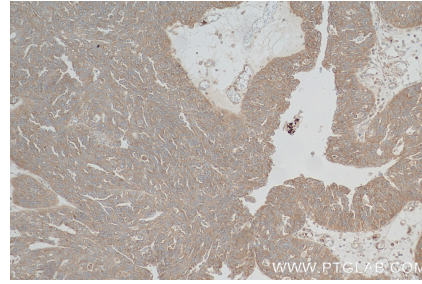
E: proteintech@ptglab.com
W: ptglab.com

This product is exclusively available under Proteintech Group brand and is not available to purchase from any other manufacturer.

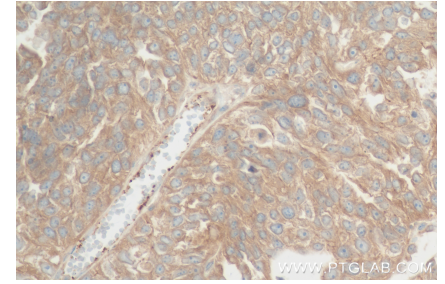
Selected Validation Data



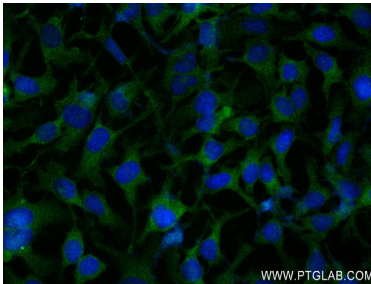
Various lysates were subjected to SDS PAGE followed by western blot with 84581-3-RR (TRAF2 antibody) at dilution of 1:5000 incubated at room temperature for 1.5 hours.



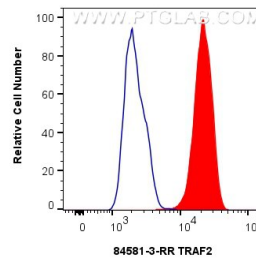
Immunohistochemical analysis of paraffin-embedded human ovary cancer tissue slide using 84581-3-RR (TRAF2 antibody) at dilution of 1:200 (under 10x lens). Heat mediated antigen retrieval with Tris-EDTA buffer (pH 9.0).



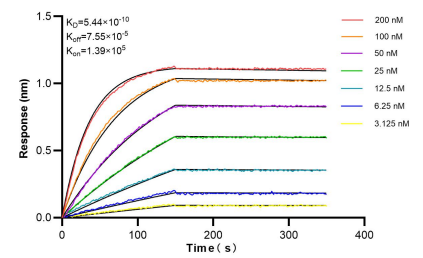
Immunohistochemical analysis of paraffin-embedded human ovary cancer tissue slide using 84581-3-RR (TRAF2 antibody) at dilution of 1:200 (under 40x lens). Heat mediated antigen retrieval with Tris-EDTA buffer (pH 9.0).



Immunofluorescent analysis of (-20°C Ethanol) fixed HeLa cells using TRAF2 antibody (84581-3-RR, Clone: 241899A2) at dilution of 1:250 and CoraLite@488-Conjugated Goat Anti-Rabbit IgG(H+L) (SA00013-2).



1×10^6 HeLa cells were intracellularly stained with 0.25 μ g TRAF2 Recombinant antibody (84581-3-RR, Clone:241899A2) and CoraLite@488-Conjugated Goat Anti-Rabbit IgG(H+L) (SA00013-2)(red), or 0.25 μ g Rabbit IgG Isotype Control RecAb (98136-1-RR, Clone: 240953C9) (blue). Cells were fixed with 4% PFA and permeabilized with Flow Cytometry Perm Buffer (PF00011-C).



Bi-layer interferometry (BLI) kinetic assays of 84581-3-RR against Human TRAF2 were performed. The affinity constant is 0.544 nM.