

For Research Use Only

TRAF2 Recombinant antibody, PBS Only (Capture)

Catalog Number: 84581-3-PBS



Basic Information

Catalog Number: 84581-3-PBS	GenBank Accession Number: BC032410	Purification Method: Protein A purification
Size: 100ug , Concentration: 1 mg/ml by Nanodrop;	GeneID (NCBI): 7186	CloneNo.: 241899A2
Source: Rabbit	UNIPROT ID: Q12933	
Isotype: IgG	Full Name: TNF receptor-associated factor 2	
Immunogen Catalog Number: AG25387	Calculated MW: 56 kDa	
	Observed MW: 53 kDa	

Applications

Tested Applications:
WB, IHC, IF/ICC, FC (Intra), Sandwich ELISA, Indirect ELISA, Sample test

Species Specificity:
human, mouse

Product Information

84581-3-PBS targets TRAF2 as part of a matched antibody pair:

MP01404-2: 84581-3-PBS capture and 84581-1-PBS detection (validated in Sandwich ELISA)

Unconjugated rabbit recombinant monoclonal antibody in PBS only (BSA and azide free) storage buffer at a concentration of 1 mg/mL, ready for conjugation. Created using Proteintech's proprietary in-house recombinant technology. Recombinant production enables unrivalled batch-to-batch consistency, easy scale-up, and future security of supply.

This conjugation ready format makes antibodies ideal for use in many applications including: ELISAs, multiplex assays requiring matched pairs, mass cytometry, and multiplex imaging applications. Antibody use should be optimized by the end user for each application and assay.

Background Information

Tumor necrosis factor (TNF) receptor-associated factor-2 (TRAF2) is one of the members of the TRAF superfamily protein, which is an intracellular junction protein with E3 ligase activity. TRAF2 mediates and regulates the activation of nuclear factor kappa B (NF- κ B) and microtubule-associated protein kinase (MAPK) signaling pathways by binding to TNFR family proteins. Recent studies have demonstrated that TRAF2 regulates tumor progression by through multiple pathways.

Storage

Storage:
Store at -80°C.
Storage Buffer:
PBS Only

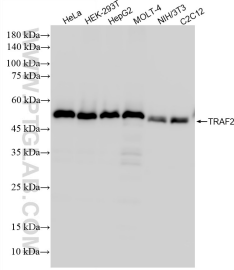
For technical support and original validation data for this product please contact:

T: 1 (888) 4PTGLAB (1-888-478-4522) (toll free in USA), or 1(312) 455-8498 (outside USA)

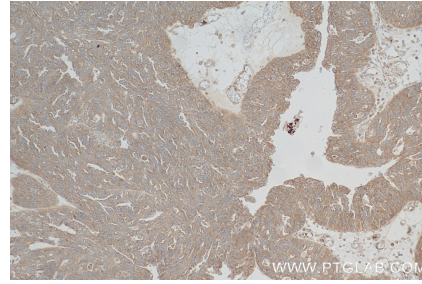
E: proteintech@ptglab.com
W: ptglab.com

This product is exclusively available under Proteintech Group brand and is not available to purchase from any other manufacturer.

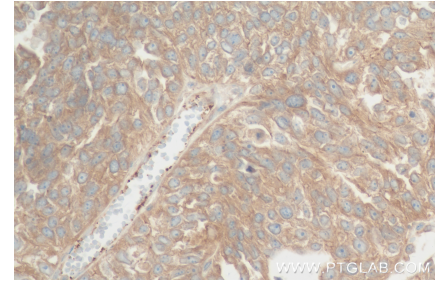
Selected Validation Data



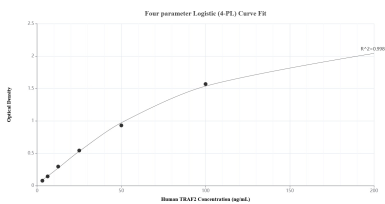
Various lysates were subjected to SDS PAGE followed by western blot with 84581-3-RR (TRAF2 antibody) at dilution of 1:5000 incubated at room temperature for 1.5 hours. This data was developed using the same antibody clone with 84581-3-PBS in a different storage buffer formulation.



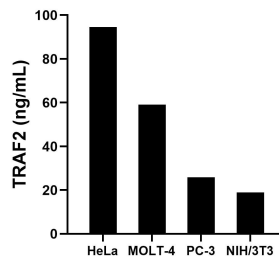
Immunohistochemical analysis of paraffin-embedded human ovary cancer tissue slide using 84581-3-RR (TRAF2 antibody) at dilution of 1:200 (under 10x lens). Heat mediated antigen retrieval with Tris-EDTA buffer (pH 9.0). This data was developed using the same antibody clone with 84581-3-PBS in a different storage buffer formulation.



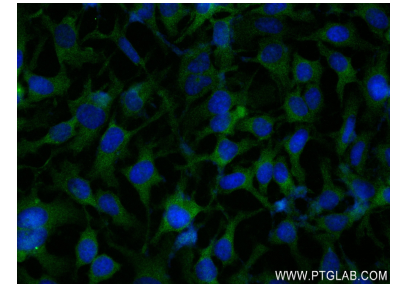
Immunohistochemical analysis of paraffin-embedded human ovary cancer tissue slide using 84581-3-RR (TRAF2 antibody) at dilution of 1:200 (under 40x lens). Heat mediated antigen retrieval with Tris-EDTA buffer (pH 9.0). This data was developed using the same antibody clone with 84581-3-PBS in a different storage buffer formulation.



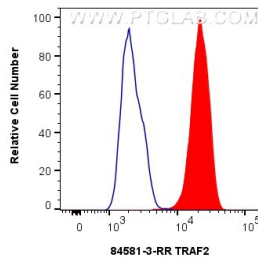
Sandwich ELISA standard curve of MP01404-2, Human TRAF2 Recombinant Matched Antibody Pair - PBS only. 84581-3-PBS was coated to a plate as the capture antibody and incubated with serial dilutions of standard Ag25387. 84581-1-PBS was HRP conjugated as the detection antibody. Range: 3.13-200 ng/mL.



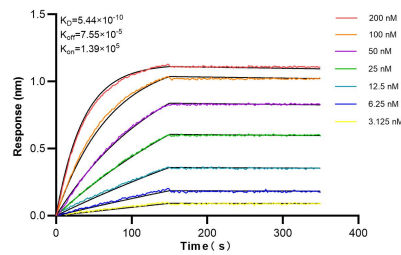
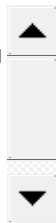
The mean TRAF2 concentration was determined to be 94.50 ng/mL in HeLa cell extract based on a 1.50 mg/mL extract load, 59.04 ng/mL in MOLT-4 cell extract based on a 1.20 mg/mL extract load, 25.97 ng/mL in PC-3 cell extract based on a 2.00 mg/mL extract load and 18.85 ng/mL in NIH/3T3 cell extract based on a 1.50 mg/mL extract load.



Immunofluorescent analysis of (-20°C Ethanol) fixed HeLa cells using TRAF2 antibody (84581-3-RR, Clone: 241899A2) at dilution of 1:250 and CoraLite@488-Conjugated Goat Anti-Rabbit IgG(H+L) (SA00013-2). This data was developed using the same antibody clone with 84581-3-PBS in a different storage buffer formulation.



1x10⁶ HeLa cells were intracellularly stained with 0.25 ug TRAF2 Recombinant antibody (84581-3-RR, Clone:241899A2) and CoraLite@488-Conjugated Goat Anti-Rabbit IgG(H+L) (SA00013-2)(red), or 0.25 ug Rabbit IgG Isotype Control RecAb (98136-1-RR, Clone: 240953C9) (blue). Cells were fixed with 4% PFA and permeabilized with Flow Cytometry Perm Buffer (PF00011-C). This data was developed using the same antibody clone with 84581-3-PBS in a



Biolayer interferometry (BLI) kinetic assays of 84581-3-RR against Human TRAF2 were performed. The affinity constant is 0.544 nM.