

For Research Use Only

WNT3A Recombinant antibody, PBS Only

Catalog Number: 84577-4-PBS



Basic Information

Catalog Number: 84577-4-PBS	GenBank Accession Number: BC103921	Purification Method: Protein A purification
Size: 100ug, Concentration: 1 mg/ml by Nanodrop;	GeneID (NCBI): 89780	CloneNo.: 241993E8
Source: Rabbit	UNIPROT ID: P56704	
Isotype: IgG	Full Name: wingless-type MMTV integration site family, member 3A	
Immunogen Catalog Number: AG25051	Calculated MW: 352 aa, 39 kDa	

Applications

Tested Applications:
IF/ICC, FC (Intra), Indirect ELISA

Species Specificity:
human

Background Information

WNT3A belongs to wingless-type MMTV integration site family, and abnormal Wnt signalling is often associated with severe human diseases, including cancer, osteoporosis and other degenerative disorders (PMID: 20716463). Wnt3a, was shown to promote trophectoderm formation in embryonic stem cells by inducing Cdx2, one of the critical transcription factors of early trophoblast development, in an LEF-1-dependent manner. Wnt3a may also activate other β -catenin-independent cascades such as ERK or PI3K/AKT signalling, again emphasizing the complexity of the Wnt signalling network.

Storage

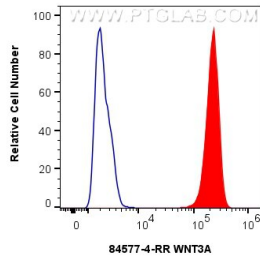
Storage:
Store at -80°C.

Storage Buffer:
PBS Only

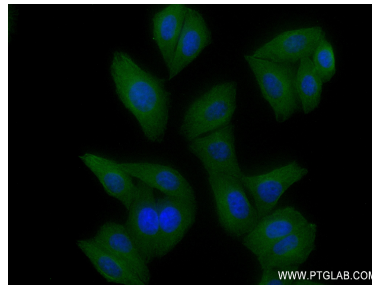
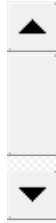
For technical support and original validation data for this product please contact:
T: 1 (888) 4PTGLAB (1-888-478-4522) (toll free in USA), or 1(312) 455-8498 (outside USA) E: proteintech@ptglab.com
W: ptglab.com

This product is exclusively available under Proteintech Group brand and is not available to purchase from any other manufacturer.

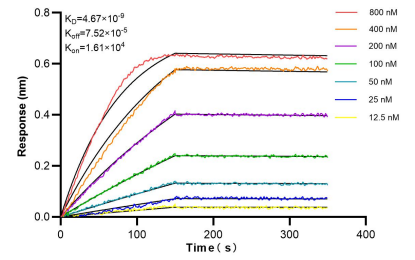
Selected Validation Data



1x10⁶ HeLa cells were intracellularly stained with 0.25 ug WNT3A Recombinant antibody (84577-4-RR, Clone:241993E8) and CoraLite®488-Conjugated Goat Anti-Rabbit IgG(H+L) (SA00013-2)(red), or 0.25 ug Rabbit IgG Isotype Control RecAb (98136-1-RR, Clone: 240953C9) (blue). Cells were fixed with 4% PFA and permeabilized with Flow Cytometry Perm Buffer (PF00011-C). This data was developed using the same antibody clone with 84577-4-PBS in a



Immunofluorescent analysis of (4% PFA) fixed HepG2 cells using WNT3A antibody (84577-4-RR, Clone: 241993E8) at dilution of 1:250 and CoraLite®488-Conjugated Goat Anti-Rabbit IgG(H+L) (SA00013-2). This data was developed using the same antibody clone with 84577-4-PBS in a different storage buffer formulation.



Bi-layer interferometry (BLI) kinetic assays of 84577-4-RR against Human WNT3A were performed. The affinity constant is 4.67 nM.