

For Research Use Only

WNT3A Recombinant antibody, PBS Only (Capture/Detector)

Catalog Number: 84577-3-PBS



Basic Information

Catalog Number: 84577-3-PBS	GenBank Accession Number: BC103921	Purification Method: Protein A purification
Size: 100ug, Concentration: 1 mg/ml by Nanodrop;	GeneID (NCBI): 89780	CloneNo.: 241993G6
Source: Rabbit	UNIPROT ID: P56704	
Isotype: IgG	Full Name: wingless-type MMTV integration site family, member 3A	
Immunogen Catalog Number: AG25051	Calculated MW: 352 aa, 39 kDa	

Applications

Tested Applications:
Cytometric bead array, Sandwich ELISA, Indirect ELISA, Sample test

Species Specificity:
human

Product Information

84577-3-PBS targets WNT3A as part of a matched antibody pair:

MP01423-1: 84577-3-PBS capture and 84577-1-PBS detection (validated in Cytometric bead array)

MP01423-2: 84577-3-PBS capture and 84577-2-PBS detection (validated in Cytometric bead array)

MP01423-3: 84577-5-PBS capture and 84577-3-PBS detection (validated in Sandwich ELISA)

Unconjugated rabbit recombinant monoclonal antibody in PBS only (BSA and azide free) storage buffer at a concentration of 1 mg/mL, ready for conjugation. Created using Proteintech's proprietary in-house recombinant technology. Recombinant production enables unrivalled batch-to-batch consistency, easy scale-up, and future security of supply.

This conjugation ready format makes antibodies ideal for use in many applications including: ELISAs, multiplex assays requiring matched pairs, mass cytometry, and multiplex imaging applications. Antibody use should be optimized by the end user for each application and assay.

Storage

Storage:
Store at -80°C.
Storage Buffer:
PBS Only

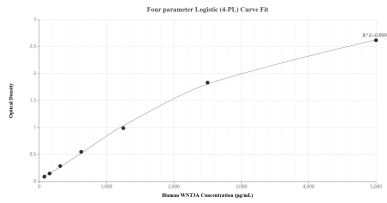
For technical support and original validation data for this product please contact:

T: 1 (888) 4PTGLAB (1-888-478-4522) (toll free in USA), or 1(312) 455-8498 (outside USA)

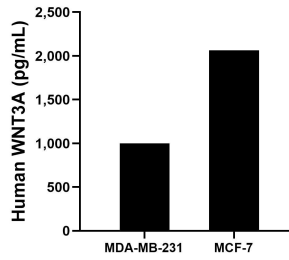
E: proteintech@ptglab.com
W: ptglab.com

This product is exclusively available under Proteintech Group brand and is not available to purchase from any other manufacturer.

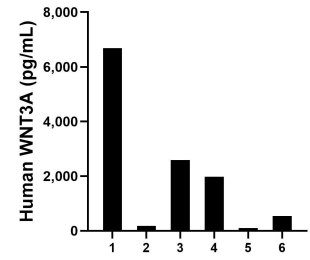
Selected Validation Data



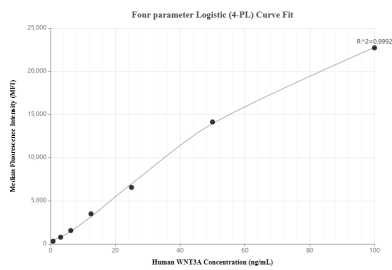
Sandwich ELISA standard curve of MP01423-3, Human WNT3A Recombinant Matched Antibody Pair - PBS only. 84577-5-PBS was coated to a plate as the capture antibody and incubated with serial dilutions of standard Ag25051. 84577-3-PBS was HRP conjugated as the detection antibody. Range: 78.1-5000 pg/mL



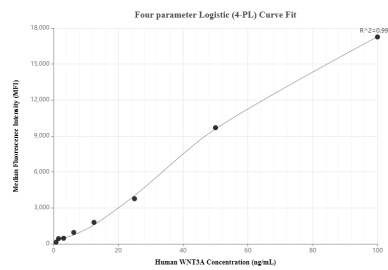
The mean WNT3A concentration was determined to be 999.1 pg/mL in MDA-MB-231 cell extract based on a 1.2 mg/mL extract load and 2,063.4 pg/mL in MCF-7 cell extract based on a 1.2 mg/mL extract load.



Serum of six individual healthy human donors was measured. The WNT3A concentration of detected samples was determined to be 2,012.8 pg/mL with a range of 101.5-6,680.8 pg/mL



Cytometric bead array standard curve of MP01423-1, WNT3A Recombinant Matched Antibody Pair, PBS Only. Capture antibody: 84577-3-PBS. Detection antibody: 84577-1-PBS. Standard: Ag25051. Range: 0.781-100 ng/mL



Cytometric bead array standard curve of MP01423-2, WNT3A Recombinant Matched Antibody Pair, PBS Only. Capture antibody: 84577-3-PBS. Detection antibody: 84577-2-PBS. Standard: Ag25051. Range: 0.781-100 ng/mL