

For Research Use Only

# MDH1 Recombinant antibody, PBS Only

Catalog Number: 84576-4-PBS



## Basic Information

<b>Catalog Number:</b> 84576-4-PBS	<b>GenBank Accession Number:</b> BC001484	<b>Purification Method:</b> Protein A purification
<b>Size:</b> 100ug, Concentration: 1 mg/ml by Nanodrop;	<b>GeneID (NCBI):</b> 4190	<b>CloneNo.:</b> 241887A1
<b>Source:</b> Rabbit	<b>UNIPROT ID:</b> P40925	
<b>Isotype:</b> IgG	<b>Full Name:</b> malate dehydrogenase 1, NAD (soluble)	
<b>Immunogen Catalog Number:</b> AG8744	<b>Calculated MW:</b> 334 aa, 36 kDa	
	<b>Observed MW:</b> 35-37 kDa	

## Applications

**Tested Applications:**  
WB, IHC, Indirect ELISA

**Species Specificity:**  
human, mouse, rat

## Background Information

MDH1 (Malate dehydrogenase, cytoplasmic) is also named as MDHA and belongs to the LDH/MDH superfamily and MDH type 2 family which catalyzes the reversible oxidation of malate to oxaloacetate, utilizing the NAD/NADH cofactor system in the citric acid cycle. It can exist as a dimer and the dimeric MDH1 is the mitochondrial isoenzyme, whereas the tetrameric MDH2 is the glycosomal isoenzyme. (PMID:10693743)

## Storage

**Storage:**  
Store at -80°C.

**Storage Buffer:**  
PBS Only

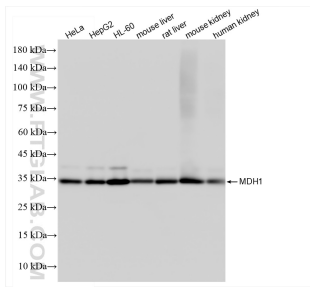
For technical support and original validation data for this product please contact:

T: 1 (888) 4PTGLAB (1-888-478-4522) (toll free in USA), or 1(312) 455-8498 (outside USA)

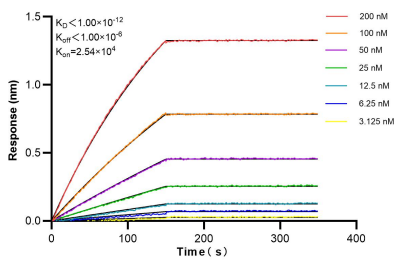
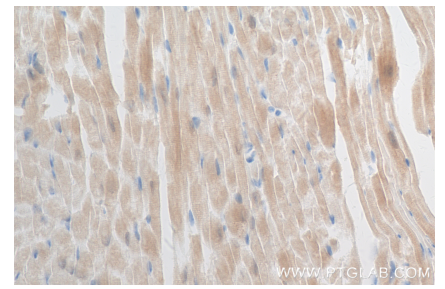
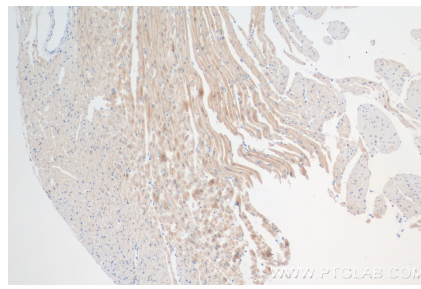
E: [proteintech@ptglab.com](mailto:proteintech@ptglab.com)  
W: [ptglab.com](http://ptglab.com)

**This product is exclusively available under Proteintech Group brand and is not available to purchase from any other manufacturer.**

## Selected Validation Data



Various lysates were subjected to SDS PAGE followed by western blot with 84576-4-RR (MDH1 antibody) at dilution of 1:10000 incubated at room temperature for 1.5 hours. This data was developed using the same antibody clone with 84576-4-PBS in a different storage buffer formulation.



Biolayer interferometry (BLI) kinetic assays of 84576-4-RR against Human MDH1 were performed. The affinity constant is below 1 pM.