

For Research Use Only

MDH1 Recombinant antibody, PBS Only (Capture/Detector)

Catalog Number: 84576-1-PBS



Basic Information

Catalog Number: 84576-1-PBS	GenBank Accession Number: BC001484	Purification Method: Protein A purification
Size: 100ug, Concentration: 1 mg/ml by Nanodrop;	GeneID (NCBI): 4190	CloneNo.: 241887C5
Source: Rabbit	UNIPROT ID: P40925	
Isotype: IgG	Full Name: malate dehydrogenase 1, NAD (soluble)	
Immunogen Catalog Number: AG8744	Calculated MW: 334 aa, 36 kDa	

Applications

Tested Applications:
Cytometric bead array, Sandwich ELISA, Indirect ELISA,
Sample test

Species Specificity:
human

Product Information

84576-1-PBS targets MDH1 as part of a matched antibody pair:

MP01422-1: 84576-3-PBS capture and 84576-1-PBS detection (validated in Cytometric bead array)

MP01422-2: 84576-1-PBS capture and 84576-2-PBS detection (validated in Cytometric bead array, Sandwich ELISA)

Unconjugated rabbit recombinant monoclonal antibody in PBS only (BSA and azide free) storage buffer at a concentration of 1 mg/mL, ready for conjugation. Created using Proteintech's proprietary in-house recombinant technology. Recombinant production enables unrivalled batch-to-batch consistency, easy scale-up, and future security of supply.

This conjugation ready format makes antibodies ideal for use in many applications including: ELISAs, multiplex assays requiring matched pairs, mass cytometry, and multiplex imaging applications. Antibody use should be optimized by the end user for each application and assay.

Storage

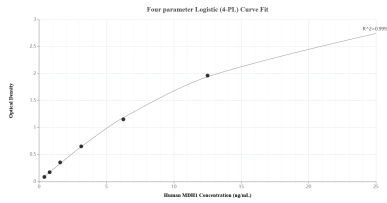
Storage:
Store at -80°C.

Storage Buffer:
PBS Only

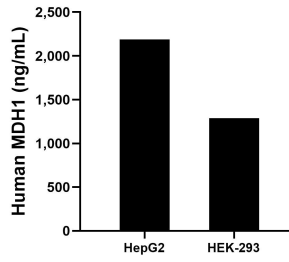
For technical support and original validation data for this product please contact:
T: 1 (888) 4PTGLAB (1-888-478-4522) (toll free in USA), or 1(312) 455-8498 (outside USA) E: proteintech@ptglab.com
W: ptglab.com

This product is exclusively available under Proteintech Group brand and is not available to purchase from any other manufacturer.

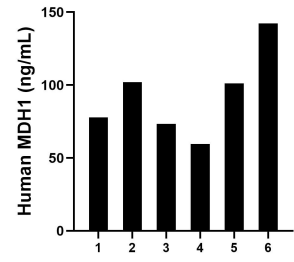
Selected Validation Data



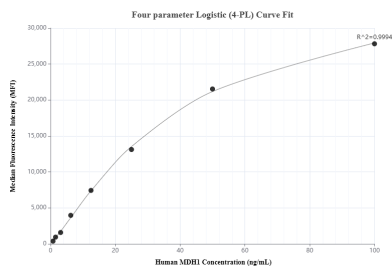
Sandwich ELISA standard curve of MP01422-2, Human MDH1 Recombinant Matched Antibody Pair - PBS only. 84576-1-PBS was coated to a plate as the capture antibody and incubated with serial dilutions of standard Ag8744. 84576-2-PBS was HRP conjugated as the detection antibody. Range: 0.391-25 ng/mL



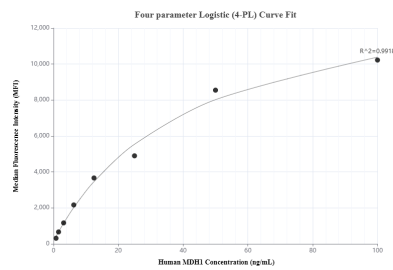
The mean MDH1 concentration was determined to be 2187.75 ng/mL in HepG2 cell extract based on a 2.30 mg/mL extract load and 1287.87 ng/mL in HEK-293 cell extract based on a 1.50 mg/mL extract load.



Serum of six individual healthy human donors was measured. The MDH1 concentration of detected samples was determined to be 92.63 ng/mL with a range of 59.50-142.37 ng/mL



Cytometric bead array standard curve of MP01422-1, MDH1 Recombinant Matched Antibody Pair, PBS Only. Capture antibody: 84576-3-PBS. Detection antibody: 84576-1-PBS. Standard: Ag8744. Range: 0.781-100 ng/mL



Cytometric bead array standard curve of MP01422-2, MDH1 Recombinant Matched Antibody Pair, PBS Only. Capture antibody: 84576-1-PBS. Detection antibody: 84576-2-PBS. Standard: Ag8744. Range: 0.781-100 ng/mL