

For Research Use Only

# LTBP2 Recombinant antibody, PBS Only

Catalog Number: 84574-4-PBS



## Basic Information

<b>Catalog Number:</b> 84574-4-PBS	<b>GenBank Accession Number:</b> BC078659	<b>Purification Method:</b> Protein A purification
<b>Size:</b> 100ug , Concentration: 1 mg/ml by Nanodrop;	<b>GeneID (NCBI):</b> 4053	<b>CloneNo.:</b> 241911C7
<b>Source:</b> Rabbit	<b>UNIPROT ID:</b> Q14767	
<b>Isotype:</b> IgG	<b>Full Name:</b> latent transforming growth factor beta binding protein 2	
<b>Immunogen Catalog Number:</b> AG29720	<b>Calculated MW:</b> 1821 aa, 195 kDa	
	<b>Observed MW:</b> 290 kDa	

## Applications

**Tested Applications:**  
WB, Indirect ELISA

**Species Specificity:**  
human

## Background Information

LTBP2, an extracellular glycoprotein mapping to chromosome 14q24, belongs to a family of latent TGF- $\beta$  binding proteins (LTBPs) that regulates a well-known growth factor, TGF- $\beta$ . LTBP2 is an elastic fiber-associating protein whose function in elastogenesis is not clear, as a DANCEbinding Protein. (PMID: 17581631) It may play an integral structural role in elastic-fiber architectural organization and/or assembly. LTBP2 associates covalently with small latent TGF-beta complex via Repeat B and Repeat C. Defects in LTBP2 are the cause of primary congenital glaucoma type 3D (GLC3D). [MIM:613086] LTBP2 is a role in the structural stability of ciliary zonules, and growth and development of lens.(PMID: 20617341) LTBP2 null mutations in an autosomal recessive ocular syndrome with megalocornea, spherophakia, and secondary glaucoma (PMID: 20179738) . LTBP2 is a biomarker of heart failure. LTBP2 has a molecular weight of 260 kDa (PMID: 20878956), and even larger molecular weights of 290 and 310 kDa were detected in tissue extracts. (PMID: 8524260)

## Storage

**Storage:**  
Store at -80°C.

**Storage Buffer:**  
PBS Only

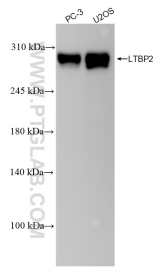
For technical support and original validation data for this product please contact:

T: 1 (888) 4PTGLAB (1-888-478-4522) (toll free in USA), or 1(312) 455-8498 (outside USA)

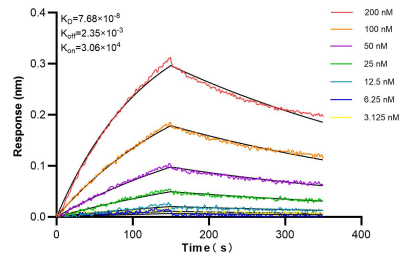
E: proteintech@ptglab.com  
W: ptglab.com

**This product is exclusively available under Proteintech Group brand and is not available to purchase from any other manufacturer.**

## Selected Validation Data



Various lysates were subjected to SDS PAGE followed by western blot with 84574-4-RR (LTBP2 antibody) at dilution of 1:10000 incubated at room temperature for 1.5 hours. This data was developed using the same antibody clone with 84574-4-PBS in a different storage buffer formulation.



Biolayer interferometry (BLI) kinetic assays of 84574-4-RR against Human LTBP2 were performed. The affinity constant is 0.779 nM.