

For Research Use Only

# CTRL Recombinant antibody

Catalog Number: 84572-4-RR



## Basic Information

**Catalog Number:**

84572-4-RR

**Size:**

100ul , Concentration: 1000 µg/ml by Nanodrop;

**Source:**

Rabbit

**Isotype:**

IgG

**GenBank Accession Number:**

BC063475

**GeneID (NCBI):**

1506

**UNIPROT ID:**

P40313

**Full Name:**

chymotrypsin-like

**Calculated MW:**

28 kDa

**Observed MW:**

25-28 kDa

**Purification Method:**

Protein A purification

**CloneNo.:**

241858D7

**Recommended Dilutions:**

WB 1:5000-1:50000

## Applications

**Tested Applications:**

WB, ELISA

**Species Specificity:**

human, mouse, rat

**Positive Controls:**

WB : mouse stomach tissue, mouse pancreas tissue, rat pancreas tissue

## Background Information

CTRL(Chymotrypsin-like protease) is also named as CTRL1 and belongs to the peptidase S1 family. The CTRL1 enzyme is active over a broad pH range. It expresses in pancreas and presence in intestinal fluid after stimulation of pancreatic secretion as a digestive enzyme(PMID:9065485). This gene encode a protein of 264 amino acid and the protein has a signal peptide of 18 amino acid and a propeptide of 15 amino acid.

## Storage

**Storage:**

Store at -20°C. Stable for one year after shipment.

**Storage Buffer:**

PBS with 0.02% sodium azide and 50% glycerol pH 7.3.

Aliquoting is unnecessary for -20°C storage

\*\*\* 20ul sizes contain 0.1% BSA

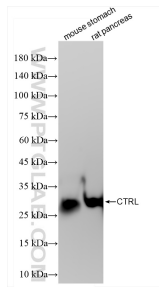
For technical support and original validation data for this product please contact:

T: 1 (888) 4PTGLAB (1-888-478-4522) (toll free in USA), or 1(312) 455-8498 (outside USA)

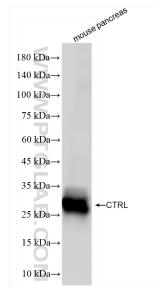
E: proteintech@ptglab.com  
W: ptglab.com

This product is exclusively available under Proteintech Group brand and is not available to purchase from any other manufacturer.

## Selected Validation Data



Various lysates were subjected to SDS PAGE followed by western blot with 84572-4-RR (CTRL antibody) at dilution of 1:20000 incubated at room temperature for 1.5 hours.



mouse pancreas tissue were subjected to SDS PAGE followed by western blot with 84572-4-RR (CTRL antibody) at dilution of 1:20000 incubated at room temperature for 1.5 hours.