

For Research Use Only

Cortactin Recombinant antibody

Catalog Number: 84569-1-RR



Basic Information

Catalog Number: 84569-1-RR	GenBank Accession Number: BC008799	Purification Method: Protein A purification
Size: 100ul , Concentration: 1000 µg/ml by Nanodrop;	GeneID (NCBI): 2017	CloneNo.: 241987A12
Source: Rabbit	UNIPROT ID: Q14247	Recommended Dilutions: WB 1:5000-1:50000
Isotype: IgG	Full Name: cortactin	
Immunogen Catalog Number: AG1940	Calculated MW: 57 kDa	
	Observed MW: 70-85 kDa	

Applications

Tested Applications: WB, ELISA	Positive Controls: WB : HeLa cells, HUVEC cells
Species Specificity: human	

Background Information

Cortactin, encoded by CTTN gene (formerly EMS1), was originally identified as a substrate of the Src kinase. It is a cytoskeletal protein that interacts with F-actin and Arp2/3 complex and plays an important role in regulation of actin assembly and cytoskeleton dynamics. Overexpression of cortactin increases cell migration, and is thought to contribute to the invasive phenotype of breast cancer and several other tumors. Three isoforms of cortactin exist due to the alternative splicing. Although cortactin has a predicted molecular weight around 65 kDa, it was detected as 80/85 doublet or as multiple bands between 75 and 85 kDa on SDS-PAGE (PMID: 18607838, 19089942).

Storage

Storage:
Store at -20°C. Stable for one year after shipment.
Storage Buffer:
PBS with 0.02% sodium azide and 50% glycerol pH 7.3.
Aliquoting is unnecessary for -20°C storage

*** 20ul sizes contain 0.1% BSA

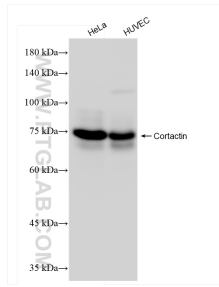
For technical support and original validation data for this product please contact:

T: 1 (888) 4PTGLAB (1-888-478-4522) (toll free in USA), or 1(312) 455-8498 (outside USA)

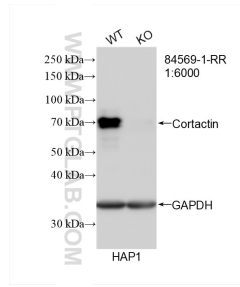
E: proteintech@ptglab.com
W: ptglab.com

This product is exclusively available under Proteintech Group brand and is not available to purchase from any other manufacturer.

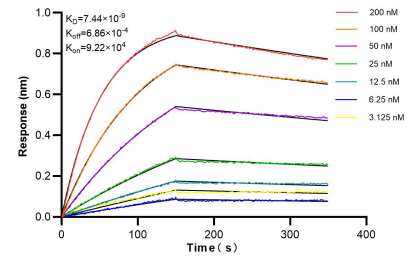
Selected Validation Data



Various lysates were subjected to SDS PAGE followed by western blot with 84569-1-RR (Cortactin antibody) at dilution of 1:10000 incubated at room temperature for 1.5 hours.



WB result of Cortactin antibody (84569-1-RR; 1:6000; room temperature for 1.5 hours) with wild-type and Cortactin knockout HAP1 cells.



Biolayer interferometry (BLI) kinetic assays of 84569-1-RR against Human Cortactin were performed. The affinity constant is 7.44 nM.