

For Research Use Only

DPCR1 Recombinant antibody

Catalog Number: 84567-2-RR



Basic Information

Catalog Number: 84567-2-RR	GenBank Accession Number: NM_080870	Purification Method: Protein A purification
Size: 100ul , Concentration: 1000 µg/ml by Nanodrop;	GeneID (NCBI): 135656	CloneNo.: 241974D11
Source: Rabbit	UNIPROT ID: Q3MIW9	Recommended Dilutions: WB 1:2000-1:16000
Isotype: IgG	Full Name: diffuse panbronchiolitis critical region 1	
Immunogen Catalog Number: AG33318	Calculated MW: 56 kDa	
	Observed MW: 56 kDa	

Applications

Tested Applications: WB, ELISA	Positive Controls:
Species Specificity: human	WB : JAR cells, human heart tissue, SGC-7901 cells, MKN-45 cells

Background Information

Diffuse panbronchiolitis critical region 1 (DPCR1) is located in the major histocompatibility complex (MHC) class I. DPCR1 is downregulated in invasive pituitary adenoma compared with that in non-invasive tumors, but upregulated in the precursor of gastric carcinogenesis (PMID: 29242154).

Storage

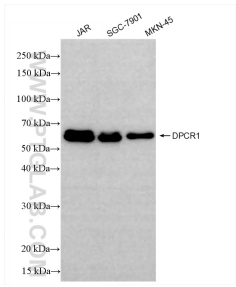
Storage:
Store at -20°C. Stable for one year after shipment.
Storage Buffer:
PBS with 0.02% sodium azide and 50% glycerol pH 7.3.
Aliquoting is unnecessary for -20°C storage

*** 20ul sizes contain 0.1% BSA

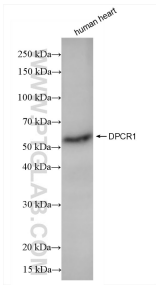
For technical support and original validation data for this product please contact:
T: 1 (888) 4PTGLAB (1-888-478-4522) (toll free in USA), or 1(312) 455-8498 (outside USA)
E: proteintech@ptglab.com
W: ptglab.com

This product is exclusively available under Proteintech Group brand and is not available to purchase from any other manufacturer.

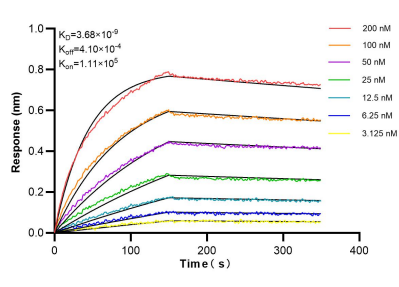
Selected Validation Data



Various lysates were subjected to SDS PAGE followed by western blot with 84567-2-RR (DPCR1 antibody) at dilution of 1:8000 incubated at room temperature for 1.5 hours.



human heart tissue were subjected to SDS PAGE followed by western blot with 84567-2-RR (DPCR1 antibody) at dilution of 1:8000 incubated at room temperature for 1.5 hours.



Biolayer interferometry (BLI) kinetic assays of 84567-2-RR against Human DPCR1 were performed. The affinity constant is 3.68 nM.