

For Research Use Only

CD21/CD35 Recombinant antibody

Catalog Number: 84565-2-RR



Basic Information

Catalog Number: 84565-2-RR	GenBank Accession Number: AAA37448.1	Purification Method: Protein A purification
Size: 100ul , Concentration: 1000 µg/ml by Nanodrop;	GeneID (NCBI): 12902	CloneNo.: 241957E6
Source: Rabbit	UNIPROT ID: P19070	Recommended Dilutions: WB 1:5000-1:50000 IHC 1:500-1:2000
Isotype: IgG	Full Name: complement receptor 2	
	Calculated MW: 113kDa	
	Observed MW: 160-210 kDa	

Applications

Tested Applications:
WB, IHC, ELISA

Species Specificity:
mouse, rat

Note-IHC: suggested antigen retrieval with TE buffer pH 9.0; (*) Alternatively, antigen retrieval may be performed with citrate buffer pH 6.0

Positive Controls:

WB : A20 cells, mouse spleen tissue, rat spleen tissue

IHC : mouse spleen tissue,

Background Information

CD21, also known as complement receptor type 2 (CR2), complement C3d receptor, and Epstein-Barr virus receptor, is a transmembrane protein that contains a small cytoplasmic domain, a transmembrane region and an extracellular domain consisting of 15 short consensus repeats (SCRs) (PMID: 6230668; 2551147). CD21 binds complement fragments C3d, C3dg and iC3b and acts as a receptor for the Epstein-Barr virus (PMID: 7753047). CD35, also known as complement receptor type 1 (CR1) or C3b/C4b receptor, binds C3b and C4b. The murine Cr2 gene encodes for both CD21 and CD35 (PMID: 2139460; 19559484). Mouse CD35 comprises 21 SCRs while mouse CD21 is identical to mouse CD35 except that it lacks the first 6 SCRs. CD21/CD35 forms trimolecular complexes with CD19 and CD81 and plays roles in the regulation of humoral immune responses (PMID: 11043778).

Storage

Storage:

Store at -20°C. Stable for one year after shipment.

Storage Buffer:

PBS with 0.02% sodium azide and 50% glycerol pH 7.3.

Aliquoting is unnecessary for -20°C storage

*** 20ul sizes contain 0.1% BSA

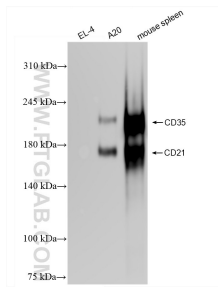
For technical support and original validation data for this product please contact:

T: 1 (888) 4PTGLAB (1-888-478-4522) (toll free in USA), or 1(312) 455-8498 (outside USA)

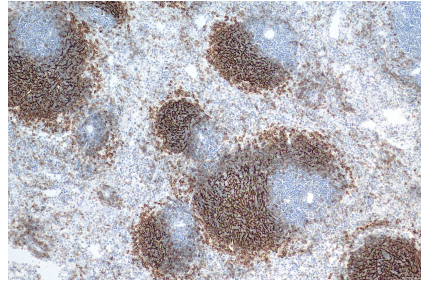
E: proteintech@ptglab.com
W: ptglab.com

This product is exclusively available under Proteintech Group brand and is not available to purchase from any other manufacturer.

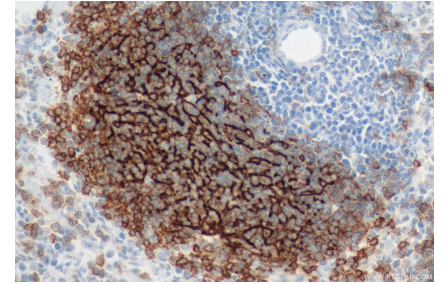
Selected Validation Data



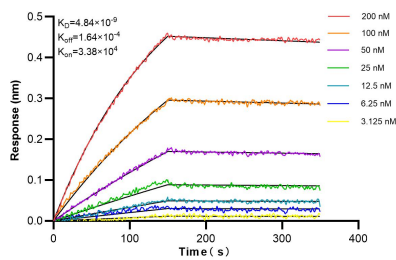
Various lysates were subjected to SDS PAGE followed by western blot with 84565-2-RR (CD21 antibody) at dilution of 1:20000 incubated at room temperature for 1.5 hours.



Immunohistochemical analysis of paraffin-embedded mouse spleen tissue slide using 84565-2-RR (CD21 antibody) at dilution of 1:1000 (under 10x lens). Heat mediated antigen retrieval with Tris-EDTA buffer (pH 9.0).



Immunohistochemical analysis of paraffin-embedded mouse spleen tissue slide using 84565-2-RR (CD21 antibody) at dilution of 1:1000 (under 40x lens). Heat mediated antigen retrieval with Tris-EDTA buffer (pH 9.0).



Biolayer interferometry (BLI) kinetic assays of 84565-2-RR against Mouse CD21/CD35 were performed. The affinity constant is 4.84 nM.