

For Research Use Only

# ER Recombinant antibody

Catalog Number:84564-4-RR



## Basic Information

<b>Catalog Number:</b> 84564-4-RR	<b>GenBank Accession Number:</b> BC128573	<b>Purification Method:</b> Protein A purification
<b>Size:</b> 100ul , Concentration: 1000 µg/ml by Nanodrop;	<b>GeneID (NCBI):</b> 2099	<b>CloneNo.:</b> 241825D5
<b>Source:</b> Rabbit	<b>UNIPROT ID:</b> P03372	<b>Recommended Dilutions:</b> WB 1:5000-1:50000 IHC 1:500-1:2000
<b>Isotype:</b> IgG	<b>Full Name:</b> estrogen receptor 1	
	<b>Calculated MW:</b> 595 aa, 66 kDa	
	<b>Observed MW:</b> 66 kDa	

## Applications

**Tested Applications:**  
WB, IHC, ELISA

**Species Specificity:**  
human

**Note-IHC: suggested antigen retrieval with TE buffer pH 9.0; (\*) Alternatively, antigen retrieval may be performed with citrate buffer pH 6.0**

**Positive Controls:**

**WB :** MCF-7 cells, T-47D cells

**IHC :** human ovary cancer tissue,

## Background Information

The estrogen receptor (ESR, ER) is a ligand-activated transcription factor composed of several domains important for hormone binding, DNA binding, and activation of transcription. ESR1, also known as ESR or NR3A1, belongs to the nuclear hormone receptor family and NR3 subfamily. It is a nuclear hormone receptor. The steroid hormones and their receptors are involved in the regulation of eukaryotic gene expression and affect cellular proliferation and differentiation in target tissues. ESR1 can activate the transcriptional activity of TFF1.[PMID: 11731608,10970861]

## Storage

**Storage:**

Store at -20°C. Stable for one year after shipment.

**Storage Buffer:**

PBS with 0.02% sodium azide and 50% glycerol pH 7.3.

Aliquoting is unnecessary for -20°C storage

**\*\*\* 20ul sizes contain 0.1% BSA**

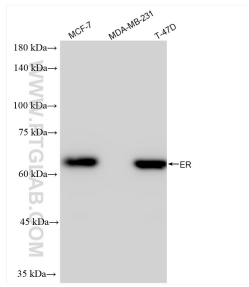
For technical support and original validation data for this product please contact:

T: 1 (888) 4PTGLAB (1-888-478-4522) (toll free in USA), or 1(312) 455-8498 (outside USA)

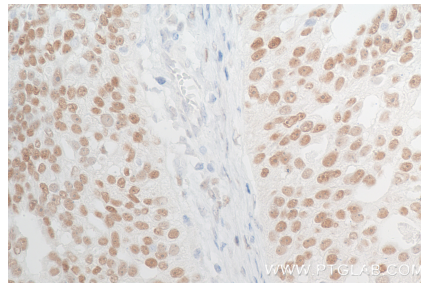
E: proteintech@ptglab.com  
W: ptglab.com

**This product is exclusively available under Proteintech Group brand and is not available to purchase from any other manufacturer.**

## Selected Validation Data



Various lysates were subjected to SDS PAGE followed by western blot with 84564-4-RR (ER antibody) at dilution of 1:10000 incubated at room temperature for 1.5 hours.



Immunohistochemical analysis of paraffin-embedded human ovary cancer tissue slide using 84564-4-RR (ER antibody) at dilution of 1:1000 (under 40x lens). Heat mediated antigen retrieval with Tris-EDTA buffer (pH 9.0).