

For Research Use Only

SCYL1 Recombinant antibody

Catalog Number: 84561-2-RR



Basic Information

Catalog Number: 84561-2-RR	GenBank Accession Number: NML_020680	Purification Method: Protein A purification
Size: 100ul , Concentration: 1000 µg/ml by Nanodrop;	GeneID (NCBI): 57410	CloneNo.: 241635E10
Source: Rabbit	UNIPROT ID: Q96KG9	Recommended Dilutions: WB 1:5000-1:50000
Isotype: IgG	Full Name: SCY1-like 1 (<i>S. cerevisiae</i>)	
Immunogen Catalog Number: AG35298	Calculated MW: 90 kDa	
	Observed MW: 110 kDa	

Applications

Tested Applications: WB, ELISA	Positive Controls: WB : HEK-293T cells, HeLa cells, K-562 cells, NIH/3T3 cells
Species Specificity: human, mouse	

Storage

Storage:
Store at -20°C. Stable for one year after shipment.
Storage Buffer:
PBS with 0.02% sodium azide and 50% glycerol pH 7.3.
Aliquoting is unnecessary for -20°C storage

***** 20ul sizes contain 0.1% BSA**

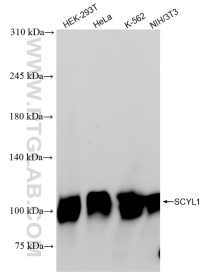
For technical support and original validation data for this product please contact:

T: 1 (888) 4PTGLAB (1-888-478-4522) (toll free in USA), or 1(312) 455-8498 (outside USA)

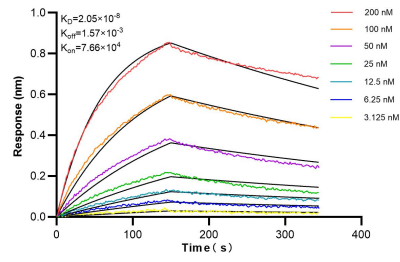
E: proteintech@ptglab.com
W: ptglab.com

This product is exclusively available under Proteintech Group brand and is not available to purchase from any other manufacturer.

Selected Validation Data



Various lysates were subjected to SDS PAGE followed by western blot with 84561-2-RR (SCYL1 antibody) at dilution of 1:10000 incubated at room temperature for 1.5 hours.



Biolayer interferometry (BLI) kinetic assays of 84561-2-RR against Human SCYL1 were performed. The affinity constant is 20.5 nM.