

For Research Use Only

# SCYL1 Recombinant antibody

Catalog Number:84561-1-RR



## Basic Information

<b>Catalog Number:</b> 84561-1-RR	<b>GenBank Accession Number:</b> NM_020680	<b>Purification Method:</b> Protein A purification
<b>Size:</b> 100ul , Concentration: 900 ug/ml by Nanodrop;	<b>GeneID (NCBI):</b> 57410	<b>CloneNo.:</b> 241635D12
<b>Source:</b> Rabbit	<b>UNIPROT ID:</b> Q96KG9	<b>Recommended Dilutions:</b> WB 1:2000-1:18000
<b>Isotype:</b> IgG	<b>Full Name:</b> SCY1-like 1 ( <i>S. cerevisiae</i> )	
<b>Immunogen Catalog Number:</b> AG35298	<b>Calculated MW:</b> 90 kDa	
	<b>Observed MW:</b> 110 kDa	

## Applications

<b>Tested Applications:</b> WB, ELISA	<b>Positive Controls:</b> WB : mouse testis tissue, mouse liver tissue, NIH/3T3 cells
<b>Species Specificity:</b> human, mouse	

## Storage

**Storage:**  
Store at -20°C. Stable for one year after shipment.  
**Storage Buffer:**  
PBS with 0.02% sodium azide and 50% glycerol pH 7.3.  
Aliquoting is unnecessary for -20°C storage

**\*\*\* 20ul sizes contain 0.1%BSA**

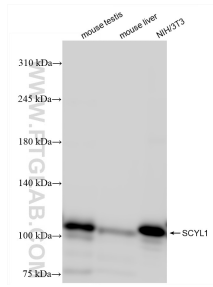
For technical support and original validation data for this product please contact:

T: 1 (888) 4PTGLAB (1-888-478-4522) (toll free in USA), or 1(312) 455-8498 (outside USA)

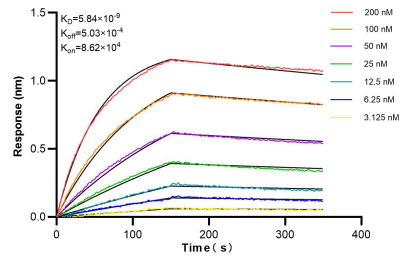
E: [proteintech@ptglab.com](mailto:proteintech@ptglab.com)  
W: [ptglab.com](http://ptglab.com)

**This product is exclusively available under Proteintech Group brand and is not available to purchase from any other manufacturer.**

## Selected Validation Data



Various lysates were subjected to SDS PAGE followed by western blot with 84561-1-RR (SCYL1 antibody) at dilution of 1:9000 incubated at room temperature for 1.5 hours.



Biacore BLI kinetic assays of 84561-1-RR against Human SCYL1 were performed. The affinity constant is below 5.84 nM.