

For Research Use Only

Integrin beta-8 Recombinant antibody

Catalog Number: 84558-1-RR



Basic Information

Catalog Number: 84558-1-RR	GenBank Accession Number: NM_002214	Purification Method: Protein A purification
Size: 100ul , Concentration: 900 µg/ml by Nanodrop;	GeneID (NCBI): 3696	CloneNo.: 241549A12
Source: Rabbit	UNIPROT ID: P26012	Recommended Dilutions: WB 1:1000-1:9000
Isotype: IgG	Full Name: integrin, beta 8	
Immunogen Catalog Number: AG31161	Calculated MW: 86 kDa	
	Observed MW: 95-100 kDa	

Applications

Tested Applications: WB, ELISA	Positive Controls: WB : HEK-293 cells, human placenta tissue
Species Specificity: human	

Background Information

Integrins are cell adhesion receptors that are heterodimers composed of non-covalently associated alpha and beta subunits. Integrin beta-8 (ITGB8), belongs to the integrin beta chain family, contains an N-terminal signal peptide, a large extracellular domain that includes four cysteine-rich repeats, a transmembrane domain, and a C-terminal cytoplasmic domain (PMID: 1918072). Integrin beta-8 associates with integrin alpha-V (ITGAV) to form an $\alpha\text{v}\beta\text{8}$ heterodimer which has been shown to bind vitronectin, fibronectin, and a latency-associated peptide of TGF- β 1/3 (PMID: 27033701). Integrin beta-8 contains multiple potential N-linked glycosylation sites. The observed molecular mass of approximately 95-100 kDa for integrin beta-8 is larger than the predicted 86 kDa, consistent with substantial glycosylation (PMID: 1918072).

Storage

Storage:
Store at -20°C. Stable for one year after shipment.
Storage Buffer:
PBS with 0.02% sodium azide and 50% glycerol pH 7.3.
Aliquoting is unnecessary for -20°C storage

*** 20ul sizes contain 0.1% BSA

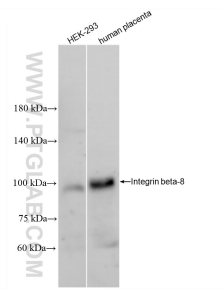
For technical support and original validation data for this product please contact:

T: 1 (888) 4PTGLAB (1-888-478-4522) (toll free in USA), or 1(312) 455-8498 (outside USA)

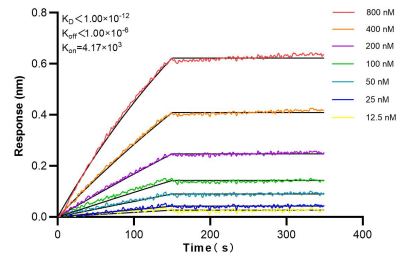
E: proteintech@ptglab.com
W: ptglab.com

This product is exclusively available under Proteintech Group brand and is not available to purchase from any other manufacturer.

Selected Validation Data



Various lysates were subjected to SDS PAGE followed by western blot with 84558-1-RR (Integrin beta-8 antibody) at dilution of 1:4500 incubated at room temperature for 1.5 hours.



Biolayer interferometry (BLI) kinetic assays of 84558-1-RR against Human Integrin beta-8 were performed. The affinity constant is below 1 pM.