

For Research Use Only

# Phospho-MEK2 (Thr394) Recombinant antibody, PBS Only

Catalog Number: 84556-1-PBS



## Basic Information

<b>Catalog Number:</b> 84556-1-PBS	<b>GenBank Accession Number:</b> BC018645	<b>Purification Method:</b> Protein A purification
<b>Size:</b> 100ug, Concentration: 1 mg/ml by Nanodrop;	<b>GeneID (NCBI):</b> 5605	<b>CloneNo.:</b> 241669E6
<b>Source:</b> Rabbit	<b>UNIPROT ID:</b> P36507	
<b>Isotype:</b> IgG	<b>Full Name:</b> mitogen-activated protein kinase kinase 2	
	<b>Calculated MW:</b> 44 kDa	
	<b>Observed MW:</b> 44 kDa	

## Applications

**Tested Applications:**  
WB, Indirect ELISA

**Species Specificity:**  
human, mouse

## Background Information

MEK2(MAPK/ERK kinase 2) is also named as MAP2K2, MKK2, PRKMK2 and belongs to the MAP kinase kinase subfamily. MAPKK is itself dependent on Ser/Thr phosphorylation for activity catalyzed by MAP kinase kinase kinases (RAF or MEKK1). MEK1 and MEK2 are closely related, dual-specificity tyrosine/threonine protein kinases found in the Ras/Raf/MEK/ERK mitogen-activated protein kinase (MAPK) signaling pathway.

## Storage

**Storage:**  
Store at -80°C.

**Storage Buffer:**  
PBS Only

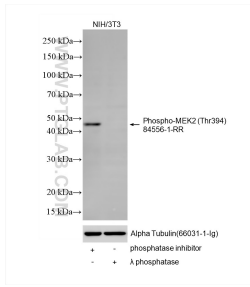
For technical support and original validation data for this product please contact:

T: 1 (888) 4PTGLAB (1-888-478-4522) (toll free in USA), or 1(312) 455-8498 (outside USA)

E: [proteintech@ptglab.com](mailto:proteintech@ptglab.com)  
W: [ptglab.com](http://ptglab.com)

**This product is exclusively available under Proteintech Group brand and is not available to purchase from any other manufacturer.**

## Selected Validation Data



Non-treated NIH/3T3 cells, phosphatase inhibitor treated NIH/3T3 cells and λ phosphatase treated NIH/3T3 cells were subjected to SDS PAGE followed by western blot with 84556-1-RR (Phospho-MEK2 (Thr394) antibody) at dilution of 1:1000 incubated at room temperature for 1.5 hours. The membrane was stripped and re-blotted with Alpha Tubulin (66031-1-Ig) antibody as a loading control. This data was developed using the same antibody clone with 84556-1-

