

For Research Use Only

# BTN2A1 Recombinant antibody

Catalog Number: 84550-1-RR



## Basic Information

<b>Catalog Number:</b> 84550-1-RR	<b>GenBank Accession Number:</b> BC016661	<b>Purification Method:</b> Protein A purification
<b>Size:</b> 100ul , Concentration: 1000 µg/ml by Nanodrop;	<b>GeneID (NCBI):</b> 11120	<b>CloneNo.:</b> 241540F10
<b>Source:</b> Rabbit	<b>UNIPROT ID:</b> Q7KYR7	<b>Recommended Dilutions:</b> WB 1:5000-1:50000
<b>Isotype:</b> IgG	<b>Full Name:</b> butyrophilin, subfamily 2, member A1	
	<b>Calculated MW:</b> 60 kDa	
	<b>Observed MW:</b> 65 kDa	

## Applications

<b>Tested Applications:</b> WB, ELISA	<b>Positive Controls:</b> WB : HeLa cells, THP-1 cells, MCF-7 cells, NCCIT cells, LNCaP cells
<b>Species Specificity:</b> human	

## Background Information

BTN2A1, also named as BT2.1, BTF 1 is a 527 amino acid protein, which belongs to the immunoglobulin superfamily. BTN2A1 is highly expressed in brain, bone marrow, small intestine, muscle, spleen and pancreas and moderate expression was seen in lung, liver and kidney. The calculated molecular weight of BTN2A1 is 59 kDa, but glycosylation of BTN2A1 is about 65-69 kDa. (PMID: 17785817)

## Storage

**Storage:**  
Store at -20°C. Stable for one year after shipment.  
**Storage Buffer:**  
PBS with 0.02% sodium azide and 50% glycerol pH 7.3.  
Aliquoting is unnecessary for -20°C storage

\*\*\* 20ul sizes contain 0.1% BSA

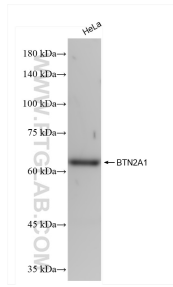
For technical support and original validation data for this product please contact:

T: 1 (888) 4PTGLAB (1-888-478-4522) (toll free in USA), or 1(312) 455-8498 (outside USA)

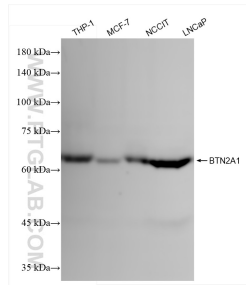
E: [proteintech@ptglab.com](mailto:proteintech@ptglab.com)  
W: [ptglab.com](http://ptglab.com)

This product is exclusively available under Proteintech Group brand and is not available to purchase from any other manufacturer.

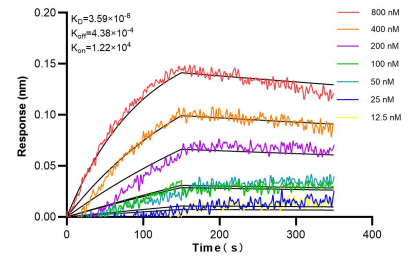
## Selected Validation Data



HeLa cells were subjected to SDS PAGE followed by western blot with 84550-1-RR (BTN2A1 antibody) at dilution of 1:10000 incubated at room temperature for 1.5 hours.



Various lysates were subjected to SDS PAGE followed by western blot with 84550-1-RR (BTN2A1 antibody) at dilution of 1:10000 incubated at room temperature for 1.5 hours.



Biolayer interferometry (BLI) kinetic assays of 84550-1-RR against Human BTN2A1 were performed. The affinity constant is 35.9 nM.