

For Research Use Only

BTN2A1 Recombinant antibody, PBS Only

Catalog Number: 84550-1-PBS



Basic Information

Catalog Number: 84550-1-PBS	GenBank Accession Number: BC016661	Purification Method: Protein A purification
Size: 100ug, Concentration: 1 mg/ml by Nanodrop;	GeneID (NCBI): 11120	CloneNo.: 241540F10
Source: Rabbit	UNIPROT ID: Q7KYR7	
Isotype: IgG	Full Name: butyrophilin, subfamily 2, member A1	
	Calculated MW: 60 kDa	
	Observed MW: 65 kDa	

Applications

Tested Applications:
WB, Indirect ELISA

Species Specificity:
human

Background Information

BTN2A1, also named as BT2.1, BTF1 is a 527 amino acid protein, which belongs to the immunoglobulin superfamily. BTN2A1 is highly expressed in brain, bone marrow, small intestine, muscle, spleen and pancreas and moderate expression was seen in lung, liver and kidney. The calculated molecular weight of BTN2A1 is 59 kDa, but glycosylation of BTN2A1 is about 65-69 kDa. (PMID: 17785817)

Storage

Storage:
Store at -80°C.

Storage Buffer:
PBS Only

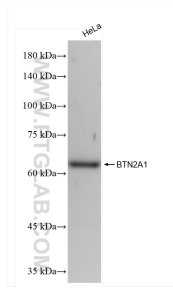
For technical support and original validation data for this product please contact:

T: 1 (888) 4PTGLAB (1-888-478-4522) (toll free in USA), or 1(312) 455-8498 (outside USA)

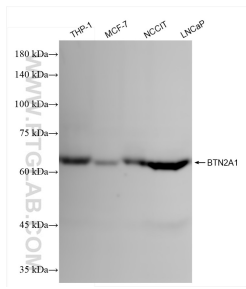
E: proteintech@ptglab.com
W: ptglab.com

This product is exclusively available under Proteintech Group brand and is not available to purchase from any other manufacturer.

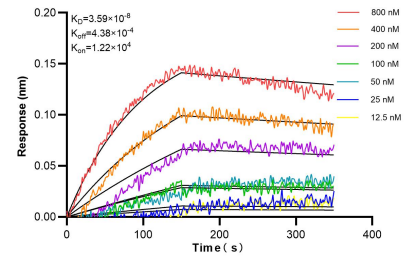
Selected Validation Data



HeLa cells were subjected to SDS PAGE followed by western blot with 84550-1-RR (BTN2A1 antibody) at dilution of 1:10000 incubated at room temperature for 1.5 hours. This data was developed using the same antibody clone with 84550-1-PBS in a different storage buffer formulation.



Various lysates were subjected to SDS PAGE followed by western blot with 84550-1-RR (BTN2A1 antibody) at dilution of 1:10000 incubated at room temperature for 1.5 hours. This data was developed using the same antibody clone with 84550-1-PBS in a different storage buffer formulation.



Biolayer interferometry (BLI) kinetic assays of 84550-1-RR against Human BTN2A1 were performed. The affinity constant is 35.9 nM.