

For Research Use Only

HSL Recombinant antibody, PBS Only (Capture)

Catalog Number: 84540-3-PBS



Basic Information

Catalog Number: 84540-3-PBS	GenBank Accession Number: BC070041	Purification Method: Protein A purification
Size: 100ug, Concentration: 1 mg/ml by Nanodrop;	GeneID (NCBI): 3991	CloneNo.: 241875F1
Source: Rabbit	UNIPROT ID: Q05469	
Isotype: IgG	Full Name: lipase, hormone-sensitive	
Immunogen Catalog Number: AG11360	Calculated MW: 117 kDa	

Applications

Tested Applications:
Cytometric bead array, Sandwich ELISA, Indirect ELISA, Sample test

Species Specificity:
human

Product Information

84540-3-PBS targets HSL as part of a matched antibody pair:

MP01374-1: 84540-3-PBS capture and 84540-1-PBS detection (validated in Cytometric bead array, Sandwich ELISA)

MP01374-2: 84540-3-PBS capture and 84540-2-PBS detection (validated in Cytometric bead array)

Unconjugated rabbit recombinant monoclonal antibody in PBS only (BSA and azide free) storage buffer at a concentration of 1 mg/mL, ready for conjugation. Created using Proteintech's proprietary in-house recombinant technology. Recombinant production enables unrivalled batch-to-batch consistency, easy scale-up, and future security of supply.

This conjugation ready format makes antibodies ideal for use in many applications including: ELISAs, multiplex assays requiring matched pairs, mass cytometry, and multiplex imaging applications. Antibody use should be optimized by the end user for each application and assay.

Storage

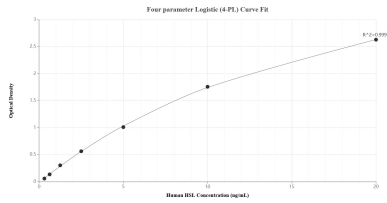
Storage:
Store at -80°C.

Storage Buffer:
PBS Only

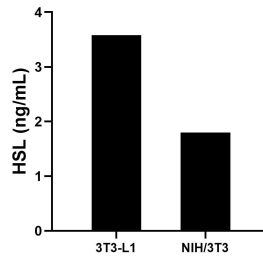
For technical support and original validation data for this product please contact:
T: 1 (888) 4PTGLAB (1-888-478-4522) (toll free in USA), or 1(312) 455-8498 (outside USA) E: proteintech@ptglab.com
W: ptglab.com

This product is exclusively available under Proteintech Group brand and is not available to purchase from any other manufacturer.

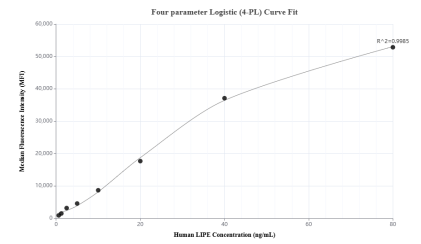
Selected Validation Data



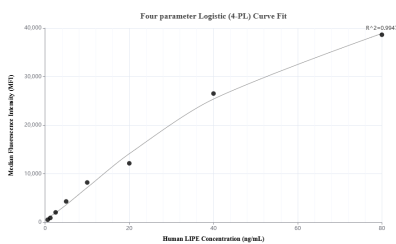
Sandwich ELISA standard curve of MP01374-1, Human HSL Recombinant Matched Antibody Pair - PBS only. 84540-3-PBS was coated to a plate as the capture antibody and incubated with serial dilutions of standard Ag11360. 84540-1-PBS was HRP conjugated as the detection antibody. Range: 0.313-20 ng/mL.



The mean HSL concentration was determined to be 3.58 ng/mL in 3T3-L1 cell extract based on a 1.30 mg/mL extract load and 1.80 ng/mL in NIH/3T3 cell extract based on a 5.90 mg/mL extract load.



Cytometric bead array standard curve of MP01374-1, HSL Recombinant Matched Antibody Pair, PBS Only. Capture antibody: 84540-3-PBS. Detection antibody: 84540-1-PBS. Standard: Ag11360. Range: 0.625-80 ng/mL.



Cytometric bead array standard curve of MP01374-2, HSL Recombinant Matched Antibody Pair, PBS Only. Capture antibody: 84540-3-PBS. Detection antibody: 84540-2-PBS. Standard: Ag11360. Range: 0.625-80 ng/mL.