

For Research Use Only

HSL Recombinant antibody, PBS Only (Detector)

Catalog Number: 84540-1-PBS



Basic Information

Catalog Number: 84540-1-PBS	GenBank Accession Number: BC070041	Purification Method: Protein A purification
Size: 100ug , Concentration: 1 mg/ml by Nanodrop;	GeneID (NCBI): 3991	CloneNo.: 241875B11
Source: Rabbit	UNIPROT ID: Q05469	
Isotype: IgG	Full Name: lipase, hormone-sensitive	
Immunogen Catalog Number: AG11360	Calculated MW: 117 kDa	
	Observed MW: 84 kDa	

Applications

Tested Applications:
WB, IHC, Cytometric bead array, Sandwich ELISA, Indirect ELISA, Sample test

Species Specificity:
human, mouse, rat

Product Information

84540-1-PBS targets HSL as part of a matched antibody pair:

MP01374-1: 84540-3-PBS capture and 84540-1-PBS detection (validated in Cytometric bead array, Sandwich ELISA)

Unconjugated rabbit recombinant monoclonal antibody in PBS only (BSA and azide free) storage buffer at a concentration of 1 mg/mL, ready for conjugation. Created using Proteintech's proprietary in-house recombinant technology. Recombinant production enables unrivalled batch-to-batch consistency, easy scale-up, and future security of supply.

This conjugation ready format makes antibodies ideal for use in many applications including: ELISAs, multiplex assays requiring matched pairs, mass cytometry, and multiplex imaging applications. Antibody use should be optimized by the end user for each application and assay.

Background Information

Hormone sensitive lipase (HSL) belongs to the 'GDXG' lipolytic enzyme family. In adipose tissue and heart, it primarily hydrolyzes stored triglycerides to free fatty acids, while in steroidogenic tissues, it principally converts cholesteryl esters to free cholesterol for steroid hormone production. HSL has two isoforms with the molecular mass of 117 kDa and 84 kDa.

Storage

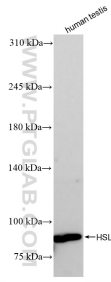
Storage:
Store at -80°C.

Storage Buffer:
PBS Only

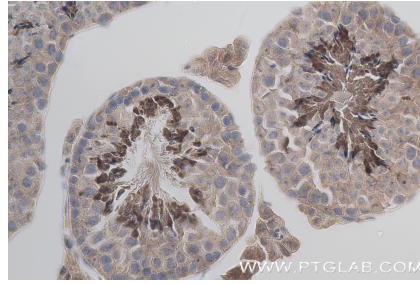
For technical support and original validation data for this product please contact:
T: 1 (888) 4PTGLAB (1-888-478-4522) (toll free in USA), or 1(312) 455-8498 (outside USA)
E: proteintech@ptglab.com
W: ptglab.com

This product is exclusively available under Proteintech Group brand and is not available to purchase from any other manufacturer.

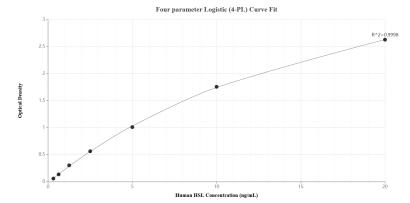
Selected Validation Data



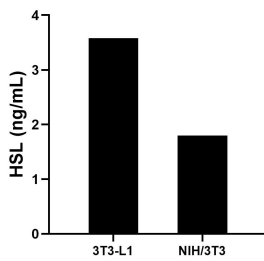
Human testis tissue were subjected to SDS PAGE followed by western blot with 84540-1-RR (HSL antibody) at dilution of 1:10000 incubated at room temperature for 1.5 hours. This data was developed using the same antibody clone with 84540-1-PBS in a different storage buffer formulation.



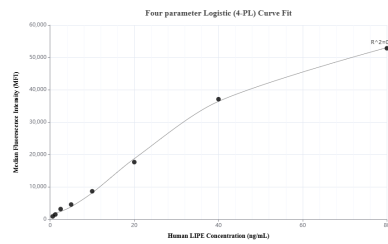
Immunohistochemical analysis of paraffin-embedded mouse testis tissue slide using 84540-1-RR (LIPE antibody) at dilution of 1:400 (under 40x lens). Heat mediated antigen retrieval with Tris-EDTA buffer (pH 9.0). This data was developed using the same antibody clone with 84540-1-PBS in a different storage buffer formulation.



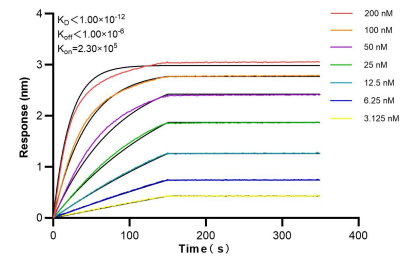
Sandwich ELISA standard curve of MP01374-1, Human HSL Recombinant Matched Antibody Pair - PBS only. 84540-3-PBS was coated to a plate as the capture antibody and incubated with serial dilutions of standard Ag11360. 84540-1-PBS was HRP conjugated as the detection antibody. Range: 0.313-20 ng/mL



The mean HSL concentration was determined to be 3.58 ng/mL in 3T3-L1 cell extract based on a 1.30 mg/mL extract load and 1.80 ng/mL in NIH/3T3 cell extract based on a 5.90 mg/mL extract load.



Cytometric bead array standard curve of MP01374-1, HSL Recombinant Matched Antibody Pair, PBS Only. Capture antibody: 84540-3-PBS. Detection antibody: 84540-1-PBS. Standard: Ag11360. Range: 0.625-80 ng/mL



Bi-layer interferometry (BLI) kinetic assays of 84540-1-RR against Human HSL were performed. The affinity constant is below 1 pM.