

For Research Use Only

F4/80 Recombinant antibody

Catalog Number: 84538-1-RR



Basic Information

Catalog Number: 84538-1-RR	GenBank Accession Number: NM_010130.4	Purification Method: Protein A purification
Size: 100ul , Concentration: 1000 µg/ml by Nanodrop;	GeneID (NCBI): 13733	CloneNo.: 241959B6
Source: Rabbit	UNIPROT ID: Q61549	Recommended Dilutions: IHC 1:2000-1:8000 IF-P 1:250-1:1000
Isotype: IgG	Full Name: EGF-like module containing, mucin-like, hormone receptor-like sequence 1	
	Calculated MW: 102 kDa	

Applications

Tested Applications:

IHC, IF-P, ELISA

Species Specificity:

mouse

Note-IHC: suggested antigen retrieval with TE buffer pH 9.0; (*) Alternatively, antigen retrieval may be performed with citrate buffer pH 6.0

Positive Controls:

IHC : mouse spleen tissue, mouse liver tissue

IF-P: mouse spleen tissue, mouse liver tissue

Background Information

Mouse F4/80, also named as EMR1 and Gpf480, is a 160kd cell surface glycoprotein which is a member of the EGF TM7 family. The F4/80 molecule is solely expressed on the surface of macrophages and serves as a marker for mature macrophage tissues, including Kupffer cells in liver, splenic red pulp macrophages, brain microglia, gut lamina propria and Langerhans cells in the skin. The function of F4/80 is unclear, but it is speculated to be involved in macrophage adhesion events, cell migration or as a G protein-coupled signaling component of macrophages.

Storage

Storage:

Store at -20°C. Stable for one year after shipment.

Storage Buffer:

PBS with 0.02% sodium azide and 50% glycerol pH 7.3.

Aliquoting is unnecessary for -20°C storage

*** 20ul sizes contain 0.1% BSA

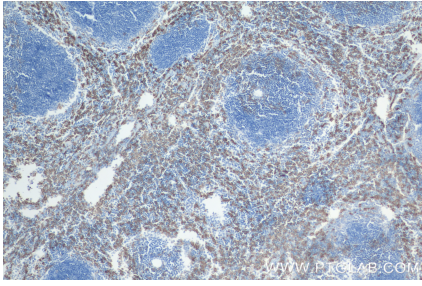
For technical support and original validation data for this product please contact:

T: 1 (888) 4PTGLAB (1-888-478-4522) (toll free in USA), or 1(312) 455-8498 (outside USA)

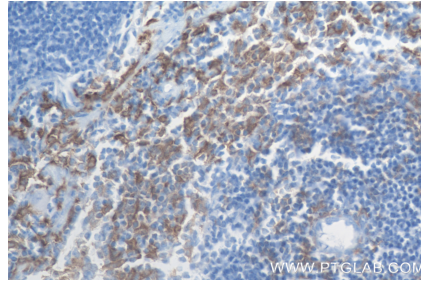
E: proteintech@ptglab.com
W: ptglab.com

This product is exclusively available under Proteintech Group brand and is not available to purchase from any other manufacturer.

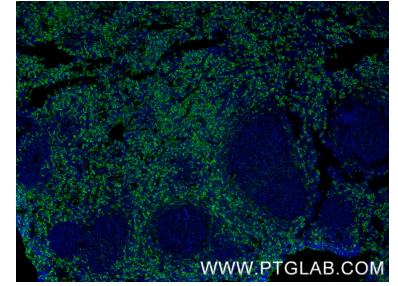
Selected Validation Data



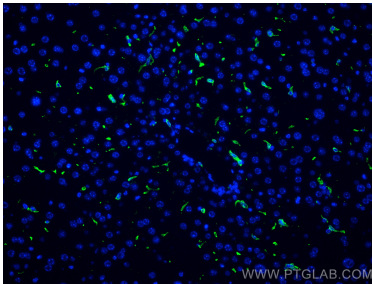
Immunohistochemical analysis of paraffin-embedded mouse spleen tissue slide using 84538-1-RR (F4/80 antibody) at dilution of 1:4000 (under 10x lens). Heat mediated antigen retrieval with .



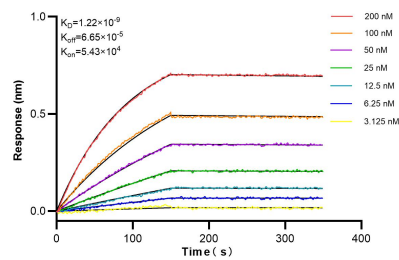
Immunohistochemical analysis of paraffin-embedded mouse spleen tissue slide using 84538-1-RR (F4/80 antibody) at dilution of 1:4000 (under 40x lens). Heat mediated antigen retrieval with .



Immunofluorescent analysis of (4% PFA) fixed paraffin-embedded mouse spleen tissue using F4/80 antibody (84538-1-RR, Clone: 241959B6) at dilution of 1:500 and CoraLite@488-Conjugated Goat Anti-Rabbit IgG(H+L) (SA00013-2). Heat mediated antigen retrieval with Tris-EDTA buffer (pH 9.0).



Immunofluorescent analysis of (4% PFA) fixed paraffin-embedded mouse liver tissue using F4/80 antibody (84538-1-RR, Clone: 241959B6) at dilution of 1:400 and CoraLite@488-Conjugated Goat Anti-Rabbit IgG(H+L) (SA00013-2). Heat mediated antigen retrieval with Tris-EDTA buffer (pH 9.0).



Biolayer interferometry (BLI) kinetic assays of 84538-1-RR against Mouse F4/80 were performed. The affinity constant is 1.22 nM.