

For Research Use Only

Mouse F4/80 Recombinant antibody, PBS Only (Capture)

Catalog Number: 84538-1-PBS



Basic Information

Catalog Number: 84538-1-PBS	GenBank Accession Number: NM_010130.4	Purification Method: Protein A purification
Size: 100ug, Concentration: 1 mg/ml by Nanodrop;	GeneID (NCBI): 13733	CloneNo.: 241959B6
Source: Rabbit	UNIPROT ID: Q61549	
Isotype: IgG	Full Name: EGF-like module containing, mucin- like, hormone receptor-like sequence 1	
	Calculated MW: 102 kDa	

Applications

Tested Applications:
IHC, IF-P, Cytometric bead array, Indirect ELISA

Species Specificity:
mouse

Product Information

84538-1-PBS targets F4/80 as part of a matched antibody pair:

MP01359-2: 84538-1-PBS capture and 84538-2-PBS detection (validated in Cytometric bead array)

Unconjugated rabbit recombinant monoclonal antibody in PBS only (BSA and azide free) storage buffer at a concentration of 1 mg/mL, ready for conjugation. Created using Proteintech's proprietary in-house recombinant technology. Recombinant production enables unrivalled batch-to-batch consistency, easy scale-up, and future security of supply.

This conjugation ready format makes antibodies ideal for use in many applications including: ELISAs, multiplex assays requiring matched pairs, mass cytometry, and multiplex imaging applications. Antibody use should be optimized by the end user for each application and assay.

Background Information

Mouse F4/80, also named as EMR1 and Gpf480, is a 160kd cell surface glycoprotein which is a member of the EGF TM7 family. The F4/80 molecule is solely expressed on the surface of macrophages and serves as a marker for mature macrophage tissues, including Kupffer cells in liver, splenic red pulp macrophages, brain microglia, gut lamina propria and Langerhans cells in the skin. The function of F4/80 is unclear, but it is speculated to be involved in macrophage adhesion events, cell migration or as a G protein-coupled signaling component of macrophages.

Storage

Storage:
Store at -80°C.
Storage Buffer:
PBS Only

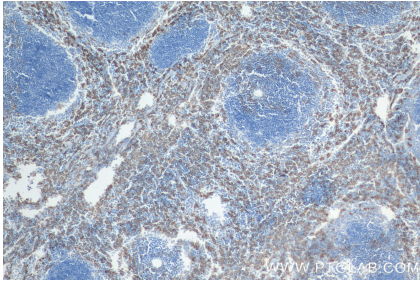
For technical support and original validation data for this product please contact:

T: 1 (888) 4PTGLAB (1-888-478-4522) (toll free
in USA), or 1(312) 455-8498 (outside USA)

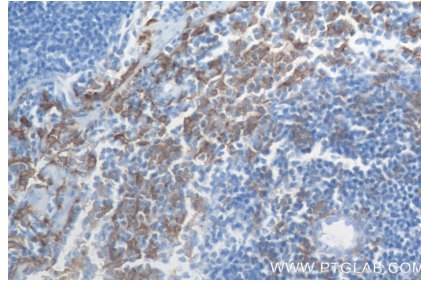
E: proteintech@ptglab.com
W: ptglab.com

This product is exclusively available under Proteintech Group brand and is not available to purchase from any other manufacturer.

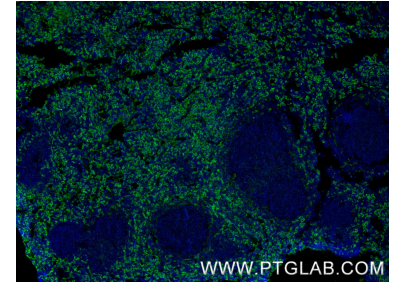
Selected Validation Data



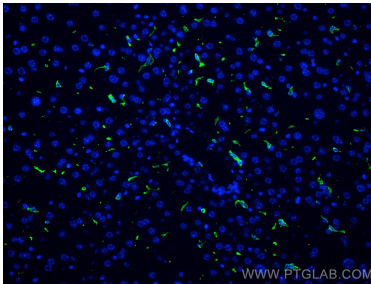
Immunohistochemical analysis of paraffin-embedded mouse spleen tissue slide using 84538-1-RR (F4/80 antibody) at dilution of 1:4000 (under 10x lens). Heat mediated antigen retrieval with . This data was developed using the same antibody clone with 84538-1-PBS in a different storage buffer formulation.



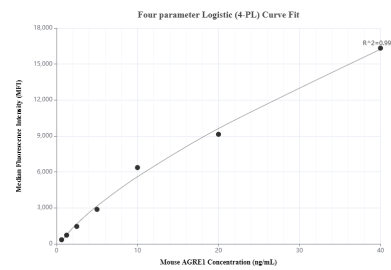
Immunohistochemical analysis of paraffin-embedded mouse spleen tissue slide using 84538-1-RR (F4/80 antibody) at dilution of 1:4000 (under 40x lens). Heat mediated antigen retrieval with . This data was developed using the same antibody clone with 84538-1-PBS in a different storage buffer formulation.



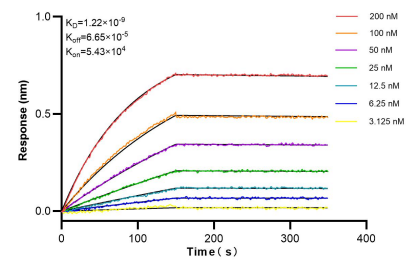
Immunofluorescent analysis of (4% PFA) fixed paraffin-embedded mouse spleen tissue using F4/80 antibody (84538-1-RR, Clone: 241959B6) at dilution of 1:500 and CoraLite@488-Conjugated Goat Anti-Rabbit IgG(H+L) (SA00013-2). Heat mediated antigen retrieval with Tris-EDTA buffer (pH 9.0). This data was developed using the same antibody clone with 84538-1-PBS in a different storage buffer formulation.



Immunofluorescent analysis of (4% PFA) fixed paraffin-embedded mouse liver tissue using F4/80 antibody (84538-1-RR, Clone: 241959B6) at dilution of 1:400 and CoraLite@488-Conjugated Goat Anti-Rabbit IgG(H+L) (SA00013-2). Heat mediated antigen retrieval with Tris-EDTA buffer (pH 9.0). This data was developed using the same antibody clone with 84538-1-PBS in a different storage buffer formulation.



Cytometric bead array standard curve of MP01359-2, MOUSE F4/80 Recombinant Matched Antibody Pair, PBS Only. Capture antibody: 84538-1-PBS. Detection antibody: 84538-2-PBS. Standard: Eg0788. Range: 0.625-40 ng/mL.



Bi-layer interferometry (BLI) kinetic assays of 84538-1-RR against Mouse F4/80 were performed. The affinity constant is 1.22 nM.