

For Research Use Only

IL-1RA Recombinant antibody, PBS Only (Capture/Detector)

Catalog Number: 84532-3-PBS



Basic Information

Catalog Number: 84532-3-PBS	GenBank Accession Number: BC009745	Purification Method: Protein A purification
Size: 100ug, Concentration: 1 mg/ml by Nanodrop;	GeneID (NCBI): 3557	CloneNo.: 241879G8
Source: Rabbit	UNIPROT ID: P18510	
Isotype: IgG	Full Name: interleukin 1 receptor antagonist	
Immunogen Catalog Number: AG1277	Calculated MW: 20 kDa	

Applications

Tested Applications:
Cytometric bead array, Sandwich ELISA, Indirect ELISA,
Sample test

Species Specificity:
human

Product Information

84532-3-PBS targets IL-1RA as part of a matched antibody pair:

MP01389-1: 84532-3-PBS capture and 84532-2-PBS detection (validated in Cytometric bead array)

MP01389-2: 84532-1-PBS capture and 84532-3-PBS detection (validated in Cytometric bead array)

MP01389-3: 84532-5-PBS capture and 84532-3-PBS detection (validated in Sandwich ELISA)

Unconjugated rabbit recombinant monoclonal antibody in PBS only (BSA and azide free) storage buffer at a concentration of 1 mg/mL, ready for conjugation. Created using Proteintech's proprietary in-house recombinant technology. Recombinant production enables unrivalled batch-to-batch consistency, easy scale-up, and future security of supply.

This conjugation ready format makes antibodies ideal for use in many applications including: ELISAs, multiplex assays requiring matched pairs, mass cytometry, and multiplex imaging applications. Antibody use should be optimized by the end user for each application and assay.

Storage

Storage:
Store at -80°C.
Storage Buffer:
PBS Only

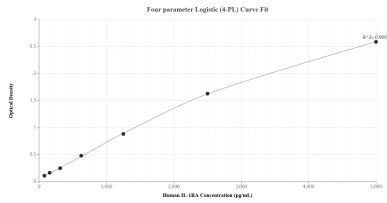
For technical support and original validation data for this product please contact:

T: 1 (888) 4PTGLAB (1-888-478-4522) (toll free
in USA), or 1(312) 455-8498 (outside USA)

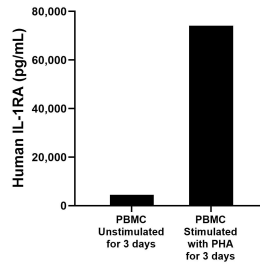
E: proteintech@ptglab.com
W: ptglab.com

This product is exclusively available under Proteintech Group brand and is not available to purchase from any other manufacturer.

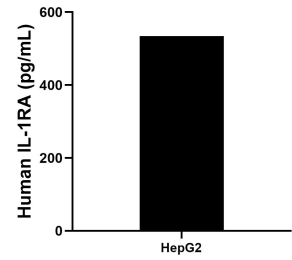
Selected Validation Data



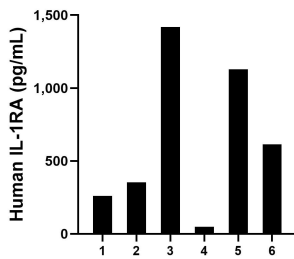
Sandwich ELISA standard curve of MP01389-3, Human IL-1RA Recombinant Matched Antibody Pair - PBS only. 84532-5-PBS was coated to a plate as the capture antibody and incubated with serial dilutions of standard Ag1277. 84532-3-PBS was HRP conjugated as the detection antibody. Range: 78.1-5000 pg/mL



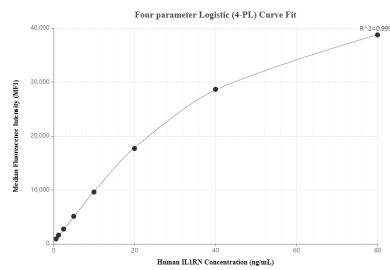
Human peripheral blood mononuclear cells (PBMC) were cultured unstimulated or stimulated with 10 µg/mL PHA for 3 days. The mean IL-1RA concentration was determined to be 4,505.9 pg/mL in unstimulated PBMC supernatant, 74,132.2 pg/mL in PHA stimulated PBMC supernatant.



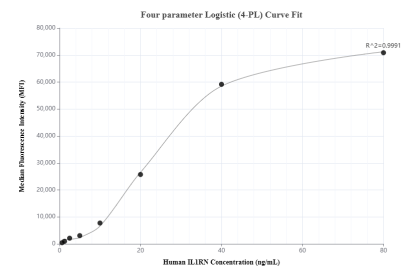
HepG2 cells were cultured in DMEM supplemented with 10% fetal bovine serum, 2.5 mM L-glutamine, 100 U/mL penicillin, and 100 µg/mL streptomycin sulfate. An aliquot of the cell culture supernate was removed, assayed for human IL-1RA, and measured 534.4 pg/mL.



Serum of six individual healthy human donors was measured. The IL-1RA concentration of detected samples was determined to be 637.3 pg/mL with a range of 49.7-1,417.8 pg/mL



Cytometric bead array standard curve of MP01389-1, IL-1RA Recombinant Matched Antibody Pair, PBS Only. Capture antibody: 84532-3-PBS. Detection antibody: 84532-2-PBS. Standard: Ag1277. Range: 0.625-80 ng/mL



Cytometric bead array standard curve of MP01389-2, IL-1RA Recombinant Matched Antibody Pair, PBS Only. Capture antibody: 84532-1-PBS. Detection antibody: 84532-3-PBS. Standard: Ag1277. Range: 0.625-80 ng/mL