

For Research Use Only

LBR Recombinant antibody, PBS Only

Catalog Number: 84522-7-PBS



Basic Information

Catalog Number: 84522-7-PBS	GenBank Accession Number: BC020079	Purification Method: Protein A purification
Size: 100ug, Concentration: 1 mg/ml by Nanodrop;	GeneID (NCBI): 3930	CloneNo.: 241864G10
Source: Rabbit	UNIPROT ID: Q14739	
Isotype: IgG	Full Name: lamin B receptor	
Immunogen Catalog Number: AG3088	Calculated MW: 615 aa, 71 kDa	

Applications

Tested Applications:
IF/ICC, Indirect ELISA

Species Specificity:
human

Storage

Storage:
Store at -80°C.
Storage Buffer:
PBS Only

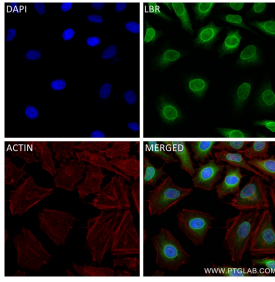
For technical support and original validation data for this product please contact:

T: 1 (888) 4PTGLAB (1-888-478-4522) (toll free
in USA), or 1(312) 455-8498 (outside USA)

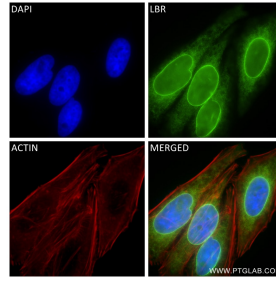
E: proteintech@ptglab.com
W: ptglab.com

This product is exclusively available under Proteintech Group brand and is not available to purchase from any other manufacturer.

Selected Validation Data



Immunofluorescent analysis of (4% PFA) fixed HeLa cells using LBR antibody (84522-7-RR, Clone: 241864G10) at dilution of 1:400 and CoraLite®488-Conjugated Goat Anti-Rabbit IgG(H+L) (SA00013-2), CL594-Phalloidin (red). This data was developed using the same antibody clone with 84522-7-PBS in a different storage buffer formulation.



Immunofluorescent analysis of (4% PFA) fixed HepG2 cells using LBR antibody (84522-7-RR, Clone: 241864G10) at dilution of 1:400 and CoraLite®488-Conjugated Goat Anti-Rabbit IgG(H+L) (SA00013-2), CL594-Phalloidin (red). This data was developed using the same antibody clone with 84522-7-PBS in a different storage buffer formulation.