

For Research Use Only

LBR Recombinant antibody

Catalog Number: 84522-6-RR



Basic Information

| | | |
|--|--|---|
| Catalog Number: 84522-6-RR | GenBank Accession Number: BC020079 | Purification Method: Protein A purification |
| Size: 100ul , Concentration: 1000 µg/ml by Nanodrop; | GeneID (NCBI): 3930 | CloneNo.: 241864H1 |
| Source: Rabbit | UNIPROT ID: Q14739 | Recommended Dilutions: WB 1:5000-1:50000 |
| Isotype: IgG | Full Name: lamin B receptor | |
| Immunogen Catalog Number: AG3088 | Calculated MW: 615 aa, 71 kDa | |
| | Observed MW: 58 kDa | |

Applications

Tested Applications:
WB, FC (Intra), ELISA

Species Specificity:
human, mouse, rat

Positive Controls:
WB : HeLa cells, HepG2 cells, HEK-293 cells, Jurkat cells, K-562 cells, C2C12 cells, HSC-T6 cells

Background Information

Lamin-B receptor (LBR) is an integral membrane protein of the inner nuclear membrane that contains a hydrophilic N-terminal end protruding into the nucleoplasm, eight hydrophobic segments that span the membrane and a short, nucleoplasmic C-terminal tail (PMID: 28858257). LBR anchors the lamina and the heterochromatin to the inner nuclear membrane (PMID: 10828963; 28858257). It is also essential for cholesterol synthesis (PMID: 27336722). Mutations of the LBR gene have been associated with autosomal recessive HEM/Greenberg skeletal dysplasia and Pelger-Huët anomaly and Greenberg skeletal dysplasia (PMID: 12618959; 12490533). The calculated molecular mass of LBR is 71 kDa, which is larger than the apparent molecular mass of 58 kDa, probably due to the aberrant migration of membrane proteins subjected to SDS-PAGE (PMID: 2847165; 2170422).

Storage

Storage:
Store at -20°C. Stable for one year after shipment.

Storage Buffer:
PBS with 0.02% sodium azide and 50% glycerol pH 7.3.

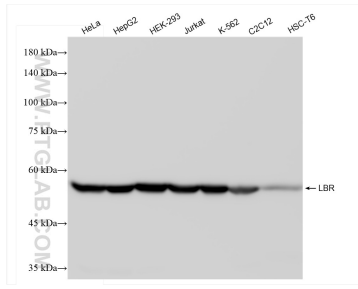
Aliquoting is unnecessary for -20°C storage

*** 20ul sizes contain 0.1% BSA

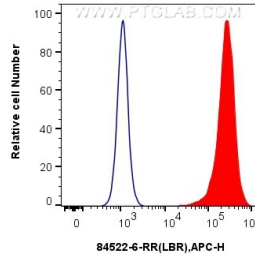
For technical support and original validation data for this product please contact:
T: 1 (888) 4PTGLAB (1-888-478-4522) (toll free in USA), or 1(312) 455-8498 (outside USA) E: proteintech@ptglab.com
W: ptglab.com

This product is exclusively available under Proteintech Group brand and is not available to purchase from any other manufacturer.

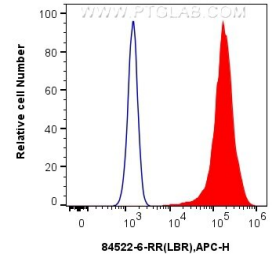
Selected Validation Data



Various lysates were subjected to SDS PAGE followed by western blot with 84522-6-RR (LBR antibody) at dilution of 1:10000 incubated at room temperature for 1.5 hours.



1×10^6 HepG2 cells were intracellularly stained with 0.25 μ g LBR Recombinant antibody (84522-6-RR, Clone:241864H1) and APC-Conjugated Goat Anti-Rabbit IgG(H+L)(red), or 0.25 μ g Rabbit IgG Isotype Control Recombinant Antibody (98136-1-RR, Clone: 240953C9) (blue). Cells were fixed with 4% PFA and permeabilized with Flow Cytometry Perm Buffer (PF00011-C).



1×10^6 HeLa cells were intracellularly stained with 0.25 μ g LBR Recombinant antibody (84522-6-RR, Clone:241864H1) and APC-Conjugated Goat Anti-Rabbit IgG(H+L)(red), or 0.25 μ g Rabbit IgG Isotype Control Recombinant Antibody (98136-1-RR, Clone: 240953C9) (blue). Cells were fixed with 4% PFA and permeabilized with Flow Cytometry Perm Buffer (PF00011-C).