

For Research Use Only

# LBR Recombinant antibody, PBS Only

Catalog Number: 84522-6-PBS



## Basic Information

<b>Catalog Number:</b> 84522-6-PBS	<b>GenBank Accession Number:</b> BC020079	<b>Purification Method:</b> Protein A purification
<b>Size:</b> 100ug, Concentration: 1 mg/ml by Nanodrop;	<b>GeneID (NCBI):</b> 3930	<b>CloneNo.:</b> 241864H1
<b>Source:</b> Rabbit	<b>UNIPROT ID:</b> Q14739	
<b>Isotype:</b> IgG	<b>Full Name:</b> lamin B receptor	
<b>Immunogen Catalog Number:</b> AG3088	<b>Calculated MW:</b> 615 aa, 71 kDa	
	<b>Observed MW:</b> 58 kDa	

## Applications

**Tested Applications:**  
WB, FC (Intra), Indirect ELISA

**Species Specificity:**  
human, mouse, rat

## Background Information

Lamin-B receptor (LBR) is an integral membrane protein of the inner nuclear membrane that contains a hydrophilic N-terminal end protruding into the nucleoplasm, eight hydrophobic segments that span the membrane and a short, nucleoplasmic C-terminal tail (PMID: 28858257). LBR anchors the lamina and the heterochromatin to the inner nuclear membrane (PMID: 10828963; 28858257). It is also essential for cholesterol synthesis (PMID: 27336722). Mutations of the LBR gene have been associated with autosomal recessive HEM/Greenberg skeletal dysplasia and Pelger-Huët anomaly and Greenberg skeletal dysplasia (PMID: 12618959; 12490533). The calculated molecular mass of LBR is 71 kDa, which is larger than the apparent molecular mass of 58 kDa, probably due to the aberrant migration of membrane proteins subjected to SDS-PAGE (PMID: 2847165; 2170422).

## Storage

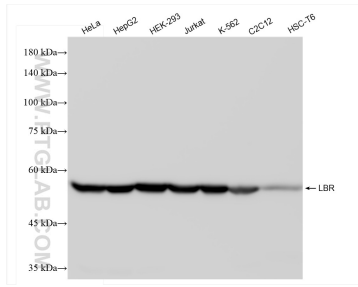
**Storage:**  
Store at -80°C.

**Storage Buffer:**  
PBS Only

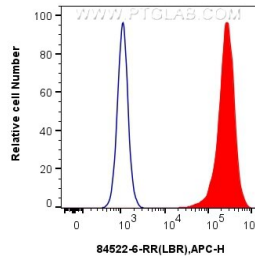
For technical support and original validation data for this product please contact:  
T: 1 (888) 4PTGLAB (1-888-478-4522) (toll free in USA), or 1(312) 455-8498 (outside USA)      E: proteintech@ptglab.com  
W: ptglab.com

This product is exclusively available under Proteintech Group brand and is not available to purchase from any other manufacturer.

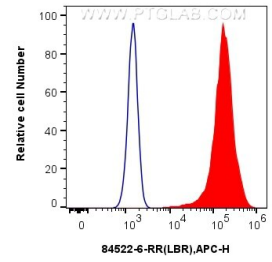
## Selected Validation Data



Various lysates were subjected to SDS PAGE followed by western blot with 84522-6-RR (LBR antibody) at dilution of 1:10000 incubated at room temperature for 1.5 hours. This data was developed using the same antibody clone with 84522-6-PBS in a different storage buffer formulation.



$1 \times 10^6$  HepG2 cells were intracellularly stained with 0.25 ug LBR Recombinant antibody (84522-6-RR, Clone:241864H1) and APC-Conjugated Goat Anti-Rabbit IgG(H+L) (red), or 0.25 ug Rabbit IgG Isotype Control Recombinant Antibody (98136-1-RR, Clone: 240953C9) (blue). Cells were fixed with 4% PFA and permeabilized with Flow Cytometry Perm Buffer (PF00011-C). This data was developed using the same antibody clone with 84522-6-PBS in a different storage buffer



$1 \times 10^6$  HeLa cells were intracellularly stained with 0.25 ug LBR Recombinant antibody (84522-6-RR, Clone:241864H1) and APC-Conjugated Goat Anti-Rabbit IgG(H+L) (red), or 0.25 ug Rabbit IgG Isotype Control Recombinant Antibody (98136-1-RR, Clone: 240953C9) (blue). Cells were fixed with 4% PFA and permeabilized with Flow Cytometry Perm Buffer (PF00011-C). This data was developed using the same antibody clone with 84522-6-PBS in a different storage buffer