

For Research Use Only

# RIT2 Recombinant antibody

Catalog Number: 84520-1-RR



## Basic Information

<b>Catalog Number:</b> 84520-1-RR	<b>GenBank Accession Number:</b> BC018060	<b>Purification Method:</b> Protein A purification
<b>Size:</b> 100ul , Concentration: 1000 µg/ml by Nanodrop;	<b>GeneID (NCBI):</b> 6014	<b>CloneNo.:</b> 241916A7
<b>Source:</b> Rabbit	<b>UNIPROT ID:</b> Q99578	<b>Recommended Dilutions:</b> WB 1:2000-1:10000
<b>Isotype:</b> IgG	<b>Full Name:</b> Ras-like without CAAX 2	
<b>Immunogen Catalog Number:</b> AG3160	<b>Calculated MW:</b> 217 aa, 25 kDa	
	<b>Observed MW:</b> 25-28 kDa	

## Applications

<b>Tested Applications:</b> WB, ELISA	<b>Positive Controls:</b> WB : rat brain tissue, mouse brain tissue, fetal human brain tissue
<b>Species Specificity:</b> human	

## Background Information

RIT2 (AKA: Rin, Ras-like in neurons) is a small, neuronal, ras-like GTPase with enriched expression in SNc DANs (PMID: 38395968). RIT2 is a member of the Ras superfamily that plays important roles in many vital cellular functions, such as differentiation and survival (PMID: 29860660). Rit2 directly interacts with the DA transporter (DAT), and is required for regulated DAT membrane trafficking. In cell culture models, Rit2 is required for EGF- and NGF-mediated neurite outgrowth, NGF-mediated ERK phosphorylation, and cell viability (PMID: 38395968).

## Storage

**Storage:**  
Store at -20°C. Stable for one year after shipment.  
**Storage Buffer:**  
PBS with 0.02% sodium azide and 50% glycerol pH 7.3.  
Aliquoting is unnecessary for -20°C storage

\*\*\* 20ul sizes contain 0.1% BSA

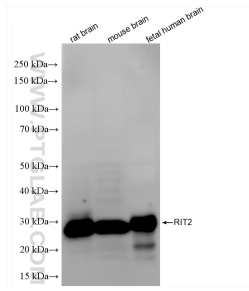
For technical support and original validation data for this product please contact:

T: 1 (888) 4PTGLAB (1-888-478-4522) (toll free in USA), or 1(312) 455-8498 (outside USA)

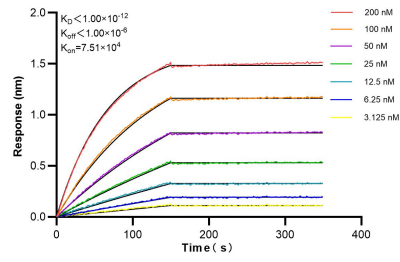
E: proteintech@ptglab.com  
W: ptglab.com

This product is exclusively available under Proteintech Group brand and is not available to purchase from any other manufacturer.

## Selected Validation Data



Various lysates were subjected to SDS PAGE followed by western blot with 84520-1-RR (RIT2 antibody) at dilution of 1:5000 incubated at room temperature for 1.5 hours.



Biolayer interferometry (BLI) kinetic assays of 84520-1-RR against Human RIT2 were performed. The affinity constant is below 1 pM.