

For Research Use Only

RIT2 Recombinant antibody, PBS Only (Detector)

Catalog Number: 84520-1-PBS



Basic Information

Catalog Number: 84520-1-PBS	GenBank Accession Number: BC018060	Purification Method: Protein A purification
Size: 100ug, Concentration: 1 mg/ml by Nanodrop;	GeneID (NCBI): 6014	CloneNo.: 241916A7
Source: Rabbit	UNIPROT ID: Q99578	
Isotype: IgG	Full Name: Ras-like without CAAX 2	
Immunogen Catalog Number: AG3160	Calculated MW: 217 aa, 25 kDa	
	Observed MW: 25-28 kDa	

Applications

Tested Applications:
WB, Cytometric bead array, Indirect ELISA

Species Specificity:
human

Product Information

84520-1-PBS targets RIT2 as part of a matched antibody pair:

MP01369-1: 84520-2-PBS capture and 84520-1-PBS detection (validated in Cytometric bead array)

Unconjugated rabbit recombinant monoclonal antibody in PBS only (BSA and azide free) storage buffer at a concentration of 1 mg/mL, ready for conjugation. Created using Proteintech's proprietary in-house recombinant technology. Recombinant production enables unrivalled batch-to-batch consistency, easy scale-up, and future security of supply.

This conjugation ready format makes antibodies ideal for use in many applications including: ELISAs, multiplex assays requiring matched pairs, mass cytometry, and multiplex imaging applications. Antibody use should be optimized by the end user for each application and assay.

Background Information

RIT2 (AKA: Rin, Ras-like in neurons) is a small, neuronal, ras-like GTPase with enriched expression in SNC DANs (PMID: 38395968). RIT2 is a member of the Ras superfamily that plays important roles in many vital cellular functions, such as differentiation and survival (PMID: 29860660). Rit2 directly interacts with the DA transporter (DAT), and is required for regulated DAT membrane trafficking. In cell culture models, Rit2 is required for EGF- and NGF-mediated neurite outgrowth, NGF-mediated ERK phosphorylation, and cell viability (PMID: 38395968).

Storage

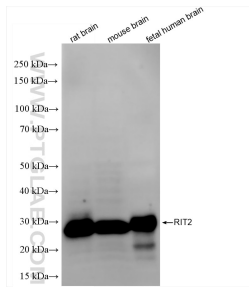
Storage:
Store at -80°C.

Storage Buffer:
PBS Only

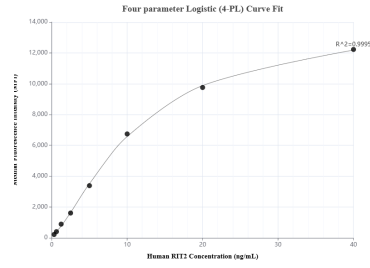
For technical support and original validation data for this product please contact:
T: 1 (888) 4PTGLAB (1-888-478-4522) (toll free in USA), or 1(312) 455-8498 (outside USA)
E: proteintech@ptglab.com
W: ptglab.com

This product is exclusively available under Proteintech Group brand and is not available to purchase from any other manufacturer.

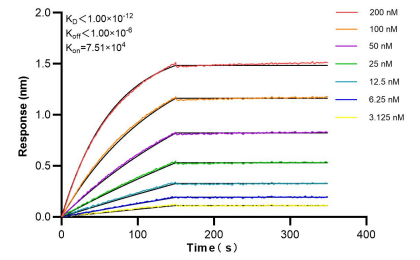
Selected Validation Data



Various lysates were subjected to SDS PAGE followed by western blot with 84520-1-RR (RIT2 antibody) at dilution of 1:5000 incubated at room temperature for 1.5 hours. This data was developed using the same antibody clone with 84520-1-PBS in a different storage buffer formulation.



Cytometric bead array standard curve of MP01369-1, RIT2 Recombinant Matched Antibody Pair, PBS Only. Capture antibody: 84520-2-PBS. Detection antibody: 84520-1-PBS. Standard: Ag3160. Range: 0.313-40 ng/mL.



Bi-layer interferometry (BLI) kinetic assays of 84520-1-RR against Human RIT2 were performed. The affinity constant is below 1 pM.