

For Research Use Only

SAE1 Recombinant antibody

Catalog Number: 84516-7-RR



Basic Information

| | | |
|--|--|---|
| Catalog Number: 84516-7-RR | GenBank Accession Number: BC000344 | Purification Method: Protein A purification |
| Size: 100ul , Concentration: 1000 µg/ml by Nanodrop; | GeneID (NCBI): 10055 | CloneNo.: 241923C6 |
| Source: Rabbit | UNIPROT ID: Q9UBE0 | Recommended Dilutions: WB 1:5000-1:50000 |
| Isotype: IgG | Full Name: SUMO1 activating enzyme subunit 1 | |
| Immunogen Catalog Number: AG0275 | Calculated MW: 38 kDa | |
| | Observed MW: 38 kDa | |

Applications

| | |
|--|--|
| Tested Applications: WB, FC (Intra), ELISA | Positive Controls: WB : HEK-293 cells, A549 cells, A431 cells, HeLa cells, K-562 cells |
| Species Specificity: human | |

Background Information

SAE1(SUMO-activating enzyme subunit 1) is also named as AOS1, SUA1, UBLE1A and belongs to the ubiquitin-activating E1 family. SAE1 has a calculated molecular mass of 38 kD. SAE1 and UBA2 form a heterodimer that functions as a SUMO-activating enzyme for the sumoylation of proteins(PMID:9920803). Western blot analysis of synchronized HeLa cells detects increased AOS1 expression as cells progressed through S phase, followed by a substantial decrease in G2 phase. Immunofluorescence analysis shows AOS1 and UBA2 distributed throughout nuclei, but they are excluded from nucleoli.(PMID:11481243).

Storage

Storage:
Store at -20°C. Stable for one year after shipment.
Storage Buffer:
PBS with 0.02% sodium azide and 50% glycerol pH 7.3.
Aliquoting is unnecessary for -20°C storage

*** 20ul sizes contain 0.1% BSA

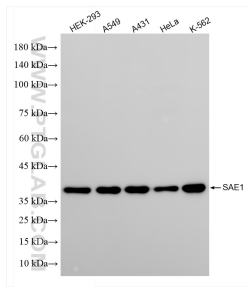
For technical support and original validation data for this product please contact:

T: 1 (888) 4PTGLAB (1-888-478-4522) (toll free in USA), or 1(312) 455-8498 (outside USA)

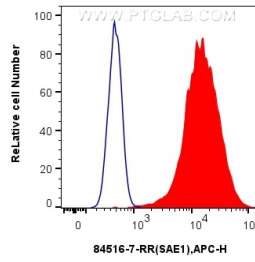
E: proteintech@ptglab.com
W: ptglab.com

This product is exclusively available under Proteintech Group brand and is not available to purchase from any other manufacturer.

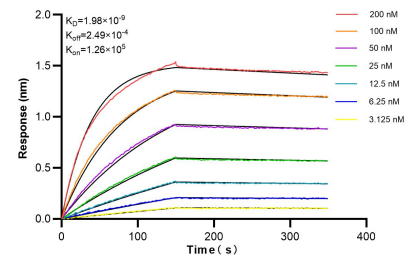
Selected Validation Data



Various lysates were subjected to SDS PAGE followed by western blot with 84516-7-RR (SAE1 antibody) at dilution of 1:10000 incubated at room temperature for 1.5 hours.



1x10⁶ HeLa cells were intracellularly stained with 0.25 ug SAE1 Recombinant antibody (84516-7-RR, Clone:241923C6) and APC-Conjugated Goat Anti-Rabbit IgG(H+L)(red), or 0.25 ug Rabbit IgG Isotype Control Recombinant Antibody (98136-1-RR, Clone:240953C9) (blue). Cells were fixed and permeabilized with True-Nuclear Transcription Factor Buffer Set.



Biacore interferometry (BLI) kinetic assays of 84516-7-RR against Human SAE1 were performed. The affinity constant is 1.98 nM.