

For Research Use Only

SAE1 Recombinant antibody, PBS Only (Detector)

Catalog Number: 84516-5-PBS



Basic Information

Catalog Number: 84516-5-PBS	GenBank Accession Number: BC000344	Purification Method: Protein A purification
Size: 100ug, Concentration: 1 mg/ml by Nanodrop;	GeneID (NCBI): 10055	CloneNo.: 241923D7
Source: Rabbit	UNIPROT ID: Q9UBEO	
Isotype: IgG	Full Name: SUMO1 activating enzyme subunit 1	
Immunogen Catalog Number: AG0275	Calculated MW: 38 kDa	

Applications

Tested Applications:
Sandwich ELISA, Indirect ELISA, Sample test

Species Specificity:
human

Product Information

84516-5-PBS targets SAE1 as part of a matched antibody pair:

MP01364-3: 84516-2-PBS capture and 84516-5-PBS detection (validated in Sandwich ELISA)

Unconjugated rabbit recombinant monoclonal antibody in PBS only (BSA and azide free) storage buffer at a concentration of 1 mg/mL, ready for conjugation. Created using Proteintech's proprietary in-house recombinant technology. Recombinant production enables unrivalled batch-to-batch consistency, easy scale-up, and future security of supply.

This conjugation ready format makes antibodies ideal for use in many applications including: ELISAs, multiplex assays requiring matched pairs, mass cytometry, and multiplex imaging applications. Antibody use should be optimized by the end user for each application and assay.

Storage

Storage:
Store at -80°C.

Storage Buffer:
PBS Only

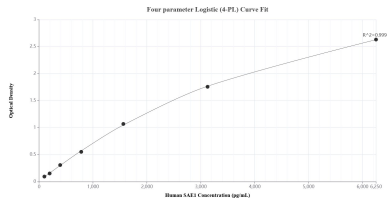
For technical support and original validation data for this product please contact:

T: 1 (888) 4PTGLAB (1-888-478-4522) (toll free in USA), or 1(312) 455-8498 (outside USA)

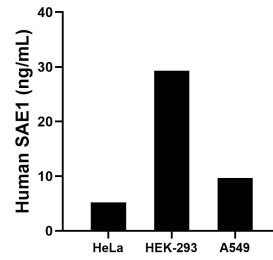
E: proteintech@ptglab.com
W: ptglab.com

This product is exclusively available under Proteintech Group brand and is not available to purchase from any other manufacturer.

Selected Validation Data



Sandwich ELISA standard curve of MP01364-3, Human SAE1 Recombinant Matched Antibody Pair - PBS only. 84516-2-PBS was coated to a plate as the capture antibody and incubated with serial dilutions of standard Ag0275. 84516-5-PBS was HRP conjugated as the detection antibody. Range: 97.7-6250 pg/mL.



The mean SAE1 concentration was determined to be 5.2 ng/mL in HeLa cell extract based on a 1.5 mg/mL extract load, 29.3 ng/mL in HEK-293 cell extract based on a 1.5 mg/mL extract load and 9.7 ng/mL in A549 cell extract based on a 1.5 mg/mL extract load.