

For Research Use Only

IL-2 R gamma/CD132 Recombinant antibody, PBS Only (Capture)

Catalog Number: 84501-6-PBS



Basic Information

Catalog Number: 84501-6-PBS	GenBank Accession Number: NM_000206.3	Purification Method: Protein A purification
Size: 100ug , Concentration: 1 mg/ml by Nanodrop;	GeneID (NCBI): 3561	CloneNo.: 242020D9
Source: Rabbit	UNIPROT ID: P31785-1	
Isotype: IgG	Full Name: interleukin 2 receptor, gamma (severe combined immunodeficiency)	
	Calculated MW: NM_000206.3	

Applications

Tested Applications:
Sandwich ELISA, Indirect ELISA, Sample test

Species Specificity:
human

Product Information

84501-6-PBS targets IL-2 R gamma/CD132 as part of a matched antibody pair:

MP01367-3: 84501-6-PBS capture and 84501-5-PBS detection (validated in Sandwich ELISA)

Unconjugated rabbit recombinant monoclonal antibody in PBS only (BSA and azide free) storage buffer at a concentration of 1 mg/mL, ready for conjugation. Created using Proteintech's proprietary in-house recombinant technology. Recombinant production enables unrivalled batch-to-batch consistency, easy scale-up, and future security of supply.

This conjugation ready format makes antibodies ideal for use in many applications including: ELISAs, multiplex assays requiring matched pairs, mass cytometry, and multiplex imaging applications. Antibody use should be optimized by the end user for each application and assay.

Storage

Storage:
Store at -80°C.

Storage Buffer:
PBS Only

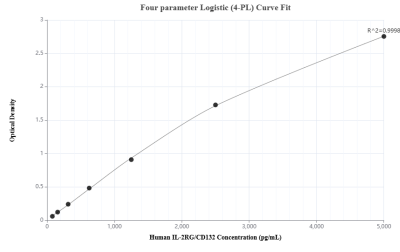
For technical support and original validation data for this product please contact:

T: 1 (888) 4PTGLAB (1-888-478-4522) (toll free in USA), or 1(312) 455-8498 (outside USA)

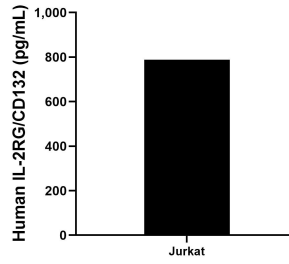
E: proteintech@ptglab.com
W: ptglab.com

This product is exclusively available under Proteintech Group brand and is not available to purchase from any other manufacturer.

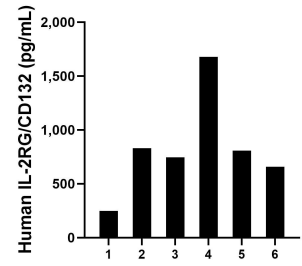
Selected Validation Data



Sandwich ELISA standard curve of MP01367-3, Human IL-2RG Recombinant Matched Antibody Pair - PBS only. 84501-6-PBS was coated to a plate as the capture antibody and incubated with serial dilutions of standard Eg1705. 84501-5-PBS was HRP conjugated as the detection antibody. Range: 78.1-5000 pg/mL.



The mean IL-2RG concentration was determined to be 788.4 pg/mL in Jurkat cell extract based on a 1.5 mg/mL extract load.



Serum of six individual healthy human donors was measured. The human IL-2RG concentration of detected samples was determined to be 827.8 pg/mL with a range of 249.6 - 1,676.9 pg/mL.