

For Research Use Only

# IL-2 R gamma/CD132 Recombinant antibody, PBS Only (Detector)

Catalog Number: 84501-5-PBS



## Basic Information

<b>Catalog Number:</b> 84501-5-PBS	<b>GenBank Accession Number:</b> NM_000206.3	<b>Purification Method:</b> Protein A purification
<b>Size:</b> 100ug, Concentration: 1 mg/ml by Nanodrop;	<b>GeneID (NCBI):</b> 3561	<b>CloneNo.:</b> 242020B12
<b>Source:</b> Rabbit	<b>UNIPROT ID:</b> P31785-1	
<b>Isotype:</b> IgG	<b>Full Name:</b> interleukin 2 receptor, gamma (severe combined immunodeficiency)	
	<b>Calculated MW:</b> NM_000206.3	

## Applications

**Tested Applications:**  
Sandwich ELISA, Indirect ELISA, Sample test

**Species Specificity:**  
human

## Product Information

84501-5-PBS targets IL-2 R gamma/CD132 as part of a matched antibody pair:

MP01367-3: 84501-6-PBS capture and 84501-5-PBS detection (validated in Sandwich ELISA)

Unconjugated rabbit recombinant monoclonal antibody in PBS only (BSA and azide free) storage buffer at a concentration of 1 mg/mL, ready for conjugation. Created using Proteintech's proprietary in-house recombinant technology. Recombinant production enables unrivalled batch-to-batch consistency, easy scale-up, and future security of supply.

This conjugation ready format makes antibodies ideal for use in many applications including: ELISAs, multiplex assays requiring matched pairs, mass cytometry, and multiplex imaging applications. Antibody use should be optimized by the end user for each application and assay.

## Storage

**Storage:**  
Store at -80°C.

**Storage Buffer:**  
PBS Only

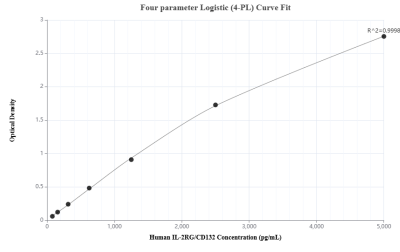
For technical support and original validation data for this product please contact:

T: 1 (888) 4PTGLAB (1-888-478-4522) (toll free in USA), or 1(312) 455-8498 (outside USA)

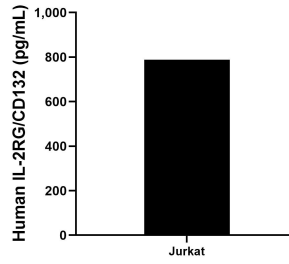
E: [proteintech@ptglab.com](mailto:proteintech@ptglab.com)  
W: [ptglab.com](http://ptglab.com)

**This product is exclusively available under Proteintech Group brand and is not available to purchase from any other manufacturer.**

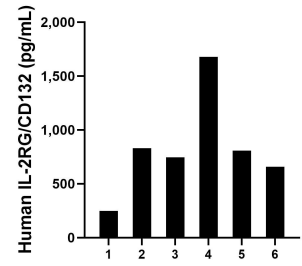
## Selected Validation Data



Sandwich ELISA standard curve of MP01367-3, Human IL-2RG Recombinant Matched Antibody Pair - PBS only. 84501-6-PBS was coated to a plate as the capture antibody and incubated with serial dilutions of standard Eg1705. 84501-5-PBS was HRP conjugated as the detection antibody. Range: 78.1-5000 pg/mL.



The mean IL-2RG concentration was determined to be 788.4 pg/mL in Jurkat cell extract based on a 1.5 mg/mL extract load.



Serum of six individual healthy human donors was measured. The human IL-2RG concentration of detected samples was determined to be 827.8 pg/mL with a range of 249.6 - 1,676.9 pg/mL.