

For Research Use Only

SELPLG/CD162 Recombinant antibody, PBS Only

Catalog Number: 84500-1-PBS



Basic Information

Catalog Number:

84500-1-PBS

Size:

100ug, Concentration: 1 mg/ml by
Nanodrop;

Source:

Rabbit

Isotype:

IgG

GenBank Accession Number:

BC029782

GeneID (NCBI):

6404

UNIPROT ID:

Q14242

Full Name:

selectin P ligand

Calculated MW:

412 aa, 43 kDa

Purification Method:

Protein A purification

CloneNo.:

241297G10

Applications

Tested Applications:

IF/ICC, Indirect ELISA

Species Specificity:

human

Background Information

SELPLG (selectin P ligand), also known as CD162 or PSGL-1, is a 120 kDa type I transmembrane mucin-like glycoprotein. It is an adhesion molecule expressed on the surface of neutrophils, monocytes, and most lymphocytes as a homodimer of approximately 230-250 kDa (PMID: 7545173; 1378449; 9353350). SELPLG plays a critical role in the early stages of inflammation due to its ability to bind E-selectin (CD62E), L-selectin (CD62L), and P-selectin (CD62P) (PMID: 35597982).

Storage

Storage:

Store at -80°C.

Storage Buffer:

PBS Only

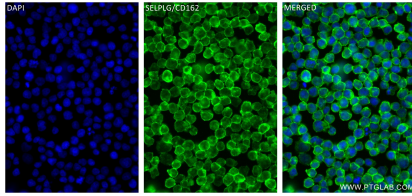
For technical support and original validation data for this product please contact:

T: 1 (888) 4PTGLAB (1-888-478-4522) (toll free
in USA), or 1(312) 455-8498 (outside USA)

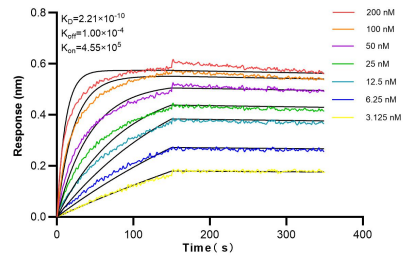
E: proteintech@ptglab.com
W: ptglab.com

This product is exclusively available under Proteintech Group brand and is not available to purchase from any other manufacturer.

Selected Validation Data



Immunofluorescent analysis of (4% PFA) fixed Jurkat cells using SELPLG antibody (84500-1-RR, Clone: 241297G10) at dilution of 1:250 and CoraLite®488-Conjugated Goat Anti-Rabbit IgG(H+L) (SA00013-2). This data was developed using the same antibody clone with 84500-1-PBS in a different storage buffer formulation.



Biolayer interferometry (BLI) kinetic assays of 84500-1-RR against Human SELPLG/CD162 were performed. The affinity constant is 0.221 nM.