

For Research Use Only

NDUFA4L2 Recombinant antibody

Catalog Number: 84498-1-RR



Basic Information

Catalog Number: 84498-1-RR	GenBank Accession Number: BC011910	Purification Method: Protein A purification
Size: 100ul , Concentration: 1000 ug/ml by Nanodrop;	GeneID (NCBI): 56901	CloneNo.: 241622B12
Source: Rabbit	UNIPROT ID: Q9NRX3	Recommended Dilutions: WB 1:5000-1:50000 IHC 1:50-1:500
Isotype: IgG	Full Name: NADH dehydrogenase (ubiquinone) 1 alpha subcomplex, 4-like 2	IF/ICC 1:250-1:1000
Immunogen Catalog Number: AG9600	Calculated MW: 87 aa, 10 kDa	
	Observed MW: 10 kDa	

Applications

Tested Applications:
WB, IHC, IF/ICC, ELISA

Species Specificity:
human, mouse

Note-IHC: suggested antigen retrieval with TE buffer pH 9.0; (*) Alternatively, antigen retrieval may be performed with citrate buffer pH 6.0

Positive Controls:

WB : HeLa cells, HepG2 cells, Jurkat cells, PC-3 cells, human liver tissue

IHC : mouse kidney tissue,

IF/ICC : HeLa cells,

Background Information

NDUFA4L2 (NADH dehydrogenase [ubiquinone] 1 alpha subcomplex subunit 4-like 2), also named as NUOMS, is a HIF-1 α target gene that localizes to the mitochondria and belongs to the complex I NDUFA4 subunit family. It downregulates oxygen consumption and Complex I activity in hypoxia. NDUFA4L2 is involved in hypoxic adaptation by decreasing mitochondrial ROS production.

Storage

Storage:

Store at -20°C. Stable for one year after shipment.

Storage Buffer:

PBS with 0.02% sodium azide and 50% glycerol pH 7.3.

Aliquoting is unnecessary for -20°C storage

*** 20ul sizes contain 0.1% BSA

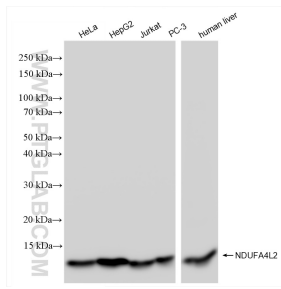
For technical support and original validation data for this product please contact:

T: 1 (888) 4PTGLAB (1-888-478-4522) (toll free in USA), or 1(312) 455-8498 (outside USA)

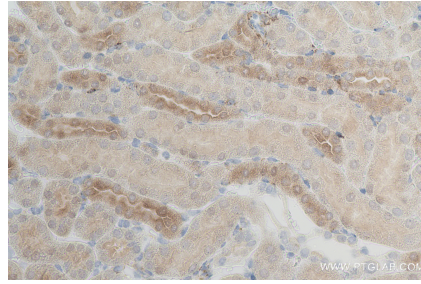
E: proteintech@ptglab.com
W: ptglab.com

This product is exclusively available under Proteintech Group brand and is not available to purchase from any other manufacturer.

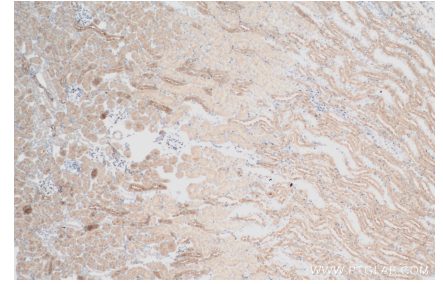
Selected Validation Data



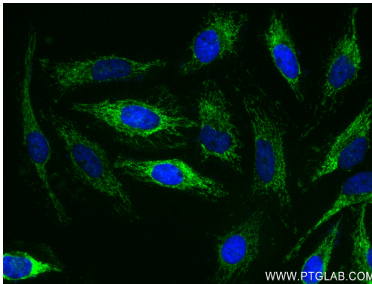
Various lysates were subjected to SDS PAGE followed by western blot with 84498-1-RR (NDUFA4L2 antibody) at dilution of 1:10000 incubated at room temperature for 1.5 hours.



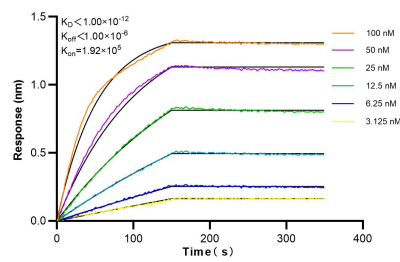
Immunohistochemical analysis of paraffin-embedded mouse kidney tissue slide using 84498-1-RR (NDUFA4L2 antibody) at dilution of 1:200 (under 10x lens). Heat mediated antigen retrieval with Tris-EDTA buffer (pH 9.0).



Immunohistochemical analysis of paraffin-embedded mouse kidney tissue slide using 84498-1-RR (NDUFA4L2 antibody) at dilution of 1:200 (under 40x lens). Heat mediated antigen retrieval with Tris-EDTA buffer (pH 9.0).



Immunofluorescent analysis of (4% PFA) fixed HeLa cells using NDUFA4L2 antibody (84498-1-RR, Clone: 241622B12) at dilution of 1:500 and CoraLite®488-Conjugated Goat Anti-Rabbit IgG(H+L) (SA00013-2).



Biolayer interferometry (BLI) kinetic assays of 84498-1-RR against Human NDUFA4L2 were performed. The affinity constant is below 1 pM.