

For Research Use Only

# NDUFA4L2 Recombinant antibody, PBS Only

Catalog Number: 84498-1-PBS



## Basic Information

<b>Catalog Number:</b> 84498-1-PBS	<b>GenBank Accession Number:</b> BC011910	<b>Purification Method:</b> Protein A purification
<b>Size:</b> 100ug, Concentration: 1 mg/ml by Nanodrop;	<b>GeneID (NCBI):</b> 56901	<b>CloneNo.:</b> 241622B12
<b>Source:</b> Rabbit	<b>UNIPROT ID:</b> Q9NRX3	
<b>Isotype:</b> IgG	<b>Full Name:</b> NADH dehydrogenase (ubiquinone) 1 alpha subcomplex, 4-like 2	
<b>Immunogen Catalog Number:</b> AG9600	<b>Calculated MW:</b> 87 aa, 10 kDa	
	<b>Observed MW:</b> 10 kDa	

## Applications

**Tested Applications:**  
WB, IHC, IF/ICC, Indirect ELISA

**Species Specificity:**  
human, mouse

## Background Information

NDUFA4L2 (NADH dehydrogenase [ubiquinone] 1 alpha subcomplex subunit 4-like 2), also named as NUOMS, is a HIF-1 $\alpha$  target gene that localizes to the mitochondria and belongs to the complex I NDUFA4 subunit family. It downregulates oxygen consumption and Complex I activity in hypoxia. NDUFA4L2 is involved in hypoxic adaptation by decreasing mitochondrial ROS production.

## Storage

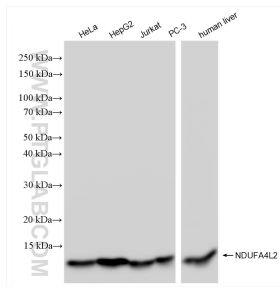
**Storage:**  
Store at -80°C.

**Storage Buffer:**  
PBS Only

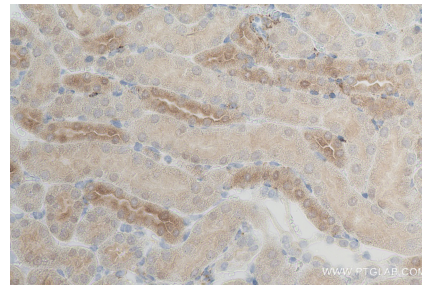
For technical support and original validation data for this product please contact:  
T: 1 (888) 4PTGLAB (1-888-478-4522) (toll free in USA), or 1(312) 455-8498 (outside USA)      E: proteintech@ptglab.com  
W: ptglab.com

This product is exclusively available under Proteintech Group brand and is not available to purchase from any other manufacturer.

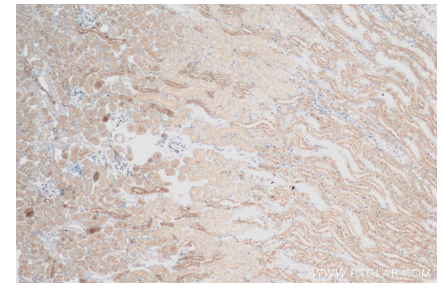
## Selected Validation Data



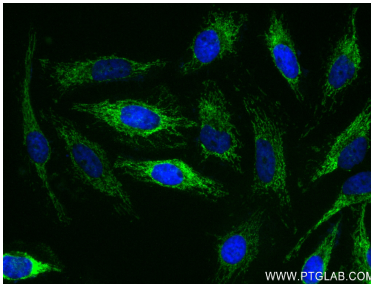
Various lysates were subjected to SDS PAGE followed by western blot with 84498-1-RR (NDUFA4L2 antibody) at dilution of 1:10000 incubated at room temperature for 1.5 hours. This data was developed using the same antibody clone with 84498-1-PBS in a different storage buffer formulation.



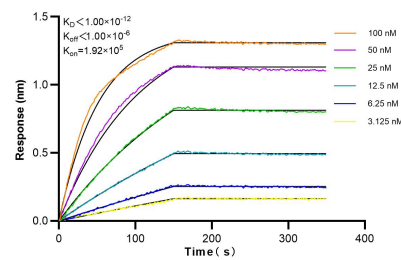
Immunohistochemical analysis of paraffin-embedded mouse kidney tissue slide using 84498-1-RR (NDUFA4L2 antibody) at dilution of 1:200 (under 10x lens). Heat mediated antigen retrieval with Tris-EDTA buffer (pH 9.0). This data was developed using the same antibody clone with 84498-1-PBS in a different storage buffer formulation.



Immunohistochemical analysis of paraffin-embedded mouse kidney tissue slide using 84498-1-RR (NDUFA4L2 antibody) at dilution of 1:200 (under 40x lens). Heat mediated antigen retrieval with Tris-EDTA buffer (pH 9.0). This data was developed using the same antibody clone with 84498-1-PBS in a different storage buffer formulation.



Immunofluorescent analysis of (4% PFA) fixed HeLa cells using NDUFA4L2 antibody (84498-1-RR, Clone: 241622B12) at dilution of 1:500 and CoraLite@488-Conjugated Goat Anti-Rabbit IgG(H+L) (SA00013-2). This data was developed using the same antibody clone with 84498-1-PBS in a different storage buffer formulation.



Biolayer interferometry (BLI) kinetic assays of 84498-1-RR against Human NDUFA4L2 were performed. The affinity constant is below 1 pM.