

For Research Use Only

GLAST/EAAT1 Recombinant antibody, PBS Only (Capture/Detector)

Catalog Number: 84497-1-PBS



Basic Information

Catalog Number: 84497-1-PBS	GenBank Accession Number: BC037310	Purification Method: Protein A purification
Size: 100ug, Concentration: 1 mg/ml by Nanodrop;	GeneID (NCBI): 6507	CloneNo.: 241907A9
Source: Rabbit	UNIPROT ID: P43003	
Isotype: IgG	Full Name: solute carrier family 1 (glial high affinity glutamate transporter), member 3	
Immunogen Catalog Number: AG16962	Calculated MW: 542 aa, 60 kDa	

Applications

Tested Applications:
Cytometric bead array, Indirect ELISA

Species Specificity:
human

Product Information

84497-1-PBS targets GLAST/EAAT1 as part of a matched antibody pair:

MP01339-1: 84497-2-PBS capture and 84497-1-PBS detection (validated in Cytometric bead array)

MP01339-2: 84497-1-PBS capture and 84497-3-PBS detection (validated in Cytometric bead array)

Unconjugated rabbit recombinant monoclonal antibody in PBS only (BSA and azide free) storage buffer at a concentration of 1 mg/mL, ready for conjugation. Created using Proteintech's proprietary in-house recombinant technology. Recombinant production enables unrivalled batch-to-batch consistency, easy scale-up, and future security of supply.

This conjugation ready format makes antibodies ideal for use in many applications including: ELISAs, multiplex assays requiring matched pairs, mass cytometry, and multiplex imaging applications. Antibody use should be optimized by the end user for each application and assay.

Storage

Storage:
Store at -80°C.
Storage Buffer:
PBS Only

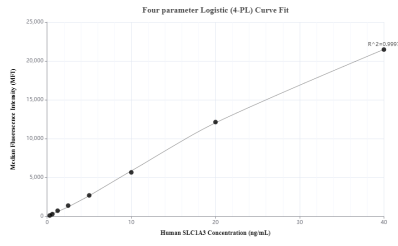
For technical support and original validation data for this product please contact:

T: 1 (888) 4PTGLAB (1-888-478-4522) (toll free
in USA), or 1(312) 455-8498 (outside USA)

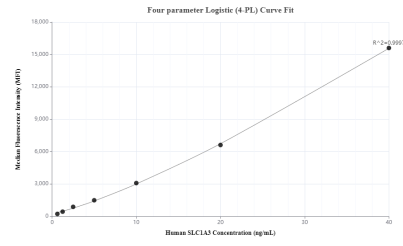
E: proteintech@ptglab.com
W: ptglab.com

This product is exclusively available under Proteintech Group brand and is not available to purchase from any other manufacturer.

Selected Validation Data



Cytometric bead array standard curve of MP01339-1, GLAST/EAAT1 Recombinant Matched Antibody Pair, PBS Only. Capture antibody: 84497-2-PBS. Detection antibody: 84497-1-PBS. Standard: Ag16962. Range: 0.313-40 ng/mL



Cytometric bead array standard curve of MP01339-2, GLAST/EAAT1 Recombinant Matched Antibody Pair, PBS Only. Capture antibody: 84497-1-PBS. Detection antibody: 84497-3-PBS. Standard: Ag16962. Range: 0.625-40 ng/mL