

For Research Use Only

RBP4 Recombinant antibody, PBS Only (Detector)

Catalog Number: 84496-4-PBS



Basic Information

Catalog Number: 84496-4-PBS	GenBank Accession Number: BC020633	Purification Method: Protein A purification
Size: 100ug, Concentration: 1 mg/ml by Nanodrop;	GeneID (NCBI): 5950	CloneNo.: 241944H4
Source: Rabbit	UNIPROT ID: P02753	
Isotype: IgG	Full Name: retinol binding protein 4, plasma	
	Calculated MW: 201 aa, 23 kDa	
	Observed MW: 23 kDa	

Applications

Tested Applications:
WB, Cytometric bead array, Indirect ELISA

Species Specificity:
human

Product Information

84496-4-PBS targets RBP4 as part of a matched antibody pair:

MP01338-2: 84496-1-PBS capture and 84496-4-PBS detection (validated in Cytometric bead array)

Unconjugated rabbit recombinant monoclonal antibody in PBS only (BSA and azide free) storage buffer at a concentration of 1 mg/mL, ready for conjugation. Created using Proteintech's proprietary in-house recombinant technology. Recombinant production enables unrivalled batch-to-batch consistency, easy scale-up, and future security of supply.

This conjugation ready format makes antibodies ideal for use in many applications including: ELISAs, multiplex assays requiring matched pairs, mass cytometry, and multiplex imaging applications. Antibody use should be optimized by the end user for each application and assay.

Background Information

RBP4 (retinol-binding protein 4) is a carrier protein that transports vitamin A (retinol) from the liver to the peripheral tissues. Synthesized primarily by hepatocytes and adipocytes as a 21 kDa non-glycosylated protein, RBP4 is secreted into the circulation as a retinol-RBP4 complex. In plasma the RBP4-retinol complex is bound to transthyretin (TRR), which prevents prevent kidney filtration. Two truncated forms of RBP4, RBP4-L (truncated at Leu-183) and RBP4-LL (truncated at Leu-182 and Leu-183), exist by proteolytic process. RBP4-L and RBP4-LL, which do not bind TTR, are normally excreted into the urine but accumulate in the serum during renal failure. Urinary RBP4 has been reported as marker for glomerular disease. RBP4 also was identified as an adipokine that elevated in some INS-resistant states. Measurement of serum RBP4 could be used to assess the risk of INS resistance, type 2 diabetes, obesity, and cardiovascular disease. (18752671, 16034410)

Storage

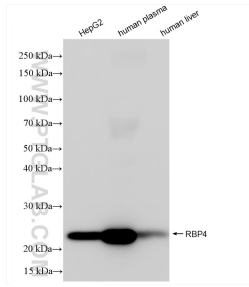
Storage:
Store at -80°C.

Storage Buffer:
PBS Only

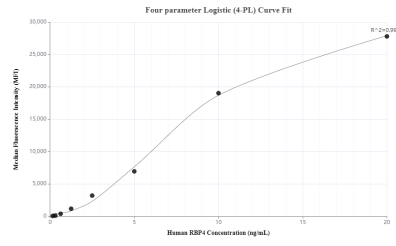
For technical support and original validation data for this product please contact:
T: 1 (888) 4PTGLAB (1-888-478-4522) (toll free in USA), or 1(312) 455-8498 (outside USA) E: proteintech@ptglab.com W: ptglab.com

This product is exclusively available under Proteintech Group brand and is not available to purchase from any other manufacturer.

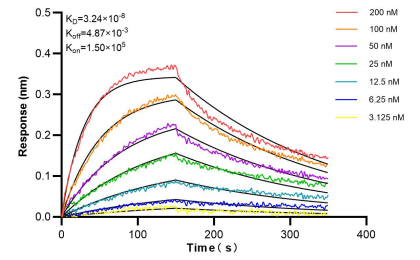
Selected Validation Data



Various lysates were subjected to SDS PAGE followed by western blot with 84496-4-RR (RBP4 antibody) at dilution of 1:10000 incubated at room temperature for 1.5 hours. This data was developed using the same antibody clone with 84496-4-PBS in a different storage buffer formulation.



Cytometric bead array standard curve of MP01338-2, RBP4 Recombinant Matched Antibody Pair, PBS Only. Capture antibody: 84496-1-PBS. Detection antibody: 84496-4-PBS. Standard: Eg31642. Range: 0.156-20 ng/mL



Bi-layer interferometry (BLI) kinetic assays of 84496-4-RR against Human RBP4 were performed. The affinity constant is 32.4 nM.