

For Research Use Only

RBP4 Recombinant antibody, PBS Only (Detector)

Catalog Number: 84496-2-PBS



Basic Information

Catalog Number: 84496-2-PBS	GenBank Accession Number: BC020633	Purification Method: Protein A purification
Size: 100ug, Concentration: 1 mg/ml by Nanodrop;	GeneID (NCBI): 5950	CloneNo.: 241944F6
Source: Rabbit	UNIPROT ID: P02753	
Isotype: IgG	Full Name: retinol binding protein 4, plasma	
	Calculated MW: 201 aa, 23 kDa	

Applications

Tested Applications:
Cytometric bead array, Sandwich ELISA, Indirect ELISA,
Sample test

Species Specificity:
human

Product Information

84496-2-PBS targets RBP4 as part of a matched antibody pair.

MP01338-1: 84496-1-PBS capture and 84496-2-PBS detection (validated in Cytometric bead array, Sandwich ELISA)

Unconjugated rabbit recombinant monoclonal antibody in PBS only (BSA and azide free) storage buffer at a concentration of 1 mg/mL, ready for conjugation. Created using Proteintech's proprietary in-house recombinant technology. Recombinant production enables unrivalled batch-to-batch consistency, easy scale-up, and future security of supply.

This conjugation ready format makes antibodies ideal for use in many applications including: ELISAs, multiplex assays requiring matched pairs, mass cytometry, and multiplex imaging applications. Antibody use should be optimized by the end user for each application and assay.

Storage

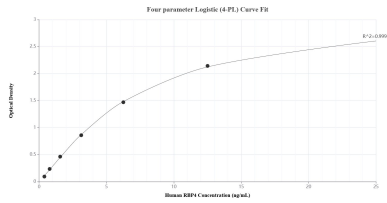
Storage:
Store at -80°C.

Storage Buffer:
PBS Only

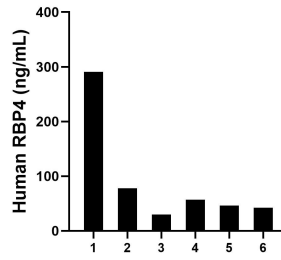
For technical support and original validation data for this product please contact:
T: 1 (888) 4PTGLAB (1-888-478-4522) (toll free in USA), or 1(312) 455-8498 (outside USA) E: proteintech@ptglab.com
W: ptglab.com

This product is exclusively available under Proteintech Group brand and is not available to purchase from any other manufacturer.

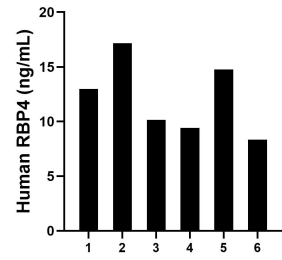
Selected Validation Data



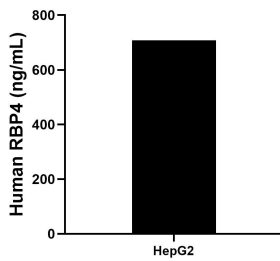
Sandwich ELISA standard curve of MP01338-1, Human RBP4 Recombinant Matched Antibody Pair - PBS only. 84496-1-PBS was coated to a plate as the capture antibody and incubated with serial dilutions of standard Eg31642. 84496-2-PBS was HRP conjugated as the detection antibody. Range: 0.391-25 ng/mL



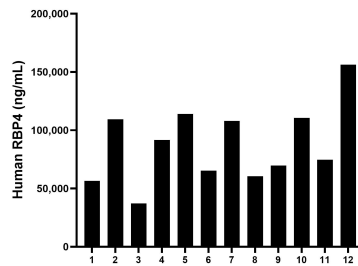
Urine of six individual healthy human donors was measured. The RBP4 concentration of detected samples was determined to be 90.68 ng/mL with a range of 29.96 - 290.83 ng/mL



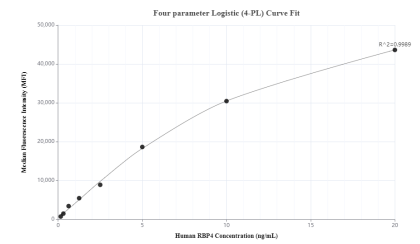
Saliva of six individual healthy human donors was measured. The RBP4 concentration of detected samples was determined to be 12.14 ng/mL with a range of 8.34-17.17 ng/mL



HepG2 cells were cultured in DMEM supplemented with 10% fetal bovine serum, 2.5 mM L-glutamine, 100 U/mL penicillin, and 100 µg/mL streptomycin sulfate. An aliquot of the cell culture supernate was removed, assayed for human RBP4, and measured 707.54 ng/mL



Serum of twelve individual healthy human donors was measured. The RBP4 concentration of detected samples was determined to be 87,804.85 ng/mL with a range of 37,160.99 - 156,178.64 ng/mL



Cytometric bead array standard curve of MP01338-1, RBP4 Recombinant Matched Antibody Pair, PBS Only. Capture antibody: 84496-1-PBS. Detection antibody: 84496-2-PBS. Standard: Eg31642. Range: 0.156-20 ng/mL