

For Research Use Only

CCDC25 Recombinant antibody, PBS Only (Detector)

Catalog Number: 84484-3-PBS



Basic Information

Catalog Number: 84484-3-PBS	GenBank Accession Number: BC032588	Purification Method: Protein A purification
Size: 100ug, Concentration: 1 mg/ml by Nanodrop;	GeneID (NCBI): 55246	CloneNo.: 241878H5
Source: Rabbit	UNIPROT ID: Q86WRO	
Isotype: IgG	Full Name: coiled-coil domain containing 25	
Immunogen Catalog Number: AG15593	Calculated MW: 208 aa, 24 kDa	
	Observed MW: 24-26 kDa	

Applications

Tested Applications:
WB, Cytometric bead array, Indirect ELISA

Species Specificity:
human, mouse

Product Information

84484-3-PBS targets CCDC25 as part of a matched antibody pair:

MP01321-1: 84484-2-PBS capture and 84484-3-PBS detection (validated in Cytometric bead array)

MP01321-2: 84484-1-PBS capture and 84484-3-PBS detection (validated in Cytometric bead array)

Unconjugated rabbit recombinant monoclonal antibody in PBS only (BSA and azide free) storage buffer at a concentration of 1 mg/mL, ready for conjugation. Created using Proteintech's proprietary in-house recombinant technology. Recombinant production enables unrivalled batch-to-batch consistency, easy scale-up, and future security of supply.

This conjugation ready format makes antibodies ideal for use in many applications including: ELISAs, multiplex assays requiring matched pairs, mass cytometry, and multiplex imaging applications. Antibody use should be optimized by the end user for each application and assay.

Storage

Storage:
Store at -80°C.

Storage Buffer:
PBS Only

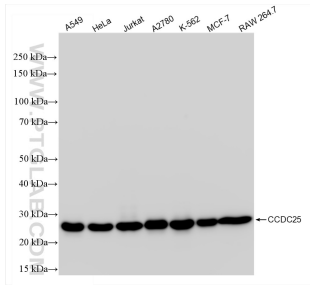
For technical support and original validation data for this product please contact:

T: 1 (888) 4PTGLAB (1-888-478-4522) (toll free in USA), or 1(312) 455-8498 (outside USA)

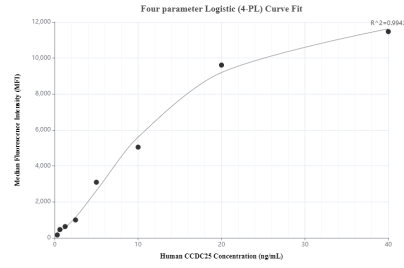
E: proteintech@ptglab.com
W: ptglab.com

This product is exclusively available under Proteintech Group brand and is not available to purchase from any other manufacturer.

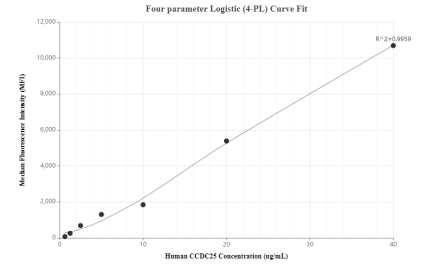
Selected Validation Data



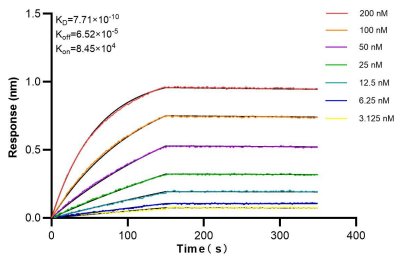
Various lysates were subjected to SDS PAGE followed by western blot with 84484-3-RR (CCDC25 antibody) at dilution of 1:10000 incubated at room temperature for 1.5 hours. This data was developed using the same antibody clone with 84484-3-PBS in a different storage buffer formulation.



Cytometric bead array standard curve of MP01321-1, CCDC25 Recombinant Matched Antibody Pair, PBS Only. Capture antibody: 84484-2-PBS. Detection antibody: 84484-3-PBS. Standard: Ag15593. Range: 0.313-40 ng/mL



Cytometric bead array standard curve of MP01321-2, CCDC25 Recombinant Matched Antibody Pair, PBS Only. Capture antibody: 84484-1-PBS. Detection antibody: 84484-3-PBS. Standard: Ag15593. Range: 0.625-40 ng/mL



Biolayer interferometry (BLI) kinetic assays of 84484-3-RR against Human CCDC25 were performed. The affinity constant is 0.771 nM.