

For Research Use Only

CCDC25 Recombinant antibody, PBS Only (Capture)

Catalog Number: 84484-2-PBS



Basic Information

Catalog Number: 84484-2-PBS	GenBank Accession Number: BC032588	Purification Method: Protein A purification
Size: 100ug, Concentration: 1 mg/ml by Nanodrop;	GeneID (NCBI): 55246	CloneNo.: 241878G10
Source: Rabbit	UNIPROT ID: Q86WRO	
Isotype: IgG	Full Name: coiled-coil domain containing 25	
Immunogen Catalog Number: AG15593	Calculated MW: 208 aa, 24 kDa	

Applications

Tested Applications:
Cytometric bead array, Sandwich ELISA, Indirect ELISA, Sample test

Species Specificity:
human

Product Information

84484-2-PBS targets CCDC25 as part of a matched antibody pair:

MP01321-1: 84484-2-PBS capture and 84484-3-PBS detection (validated in Cytometric bead array)

MP01321-3: 84484-2-PBS capture and 84484-1-PBS detection (validated in Sandwich ELISA)

Unconjugated rabbit recombinant monoclonal antibody in PBS only (BSA and azide free) storage buffer at a concentration of 1 mg/mL, ready for conjugation. Created using Proteintech's proprietary in-house recombinant technology. Recombinant production enables unrivalled batch-to-batch consistency, easy scale-up, and future security of supply.

This conjugation ready format makes antibodies ideal for use in many applications including: ELISAs, multiplex assays requiring matched pairs, mass cytometry, and multiplex imaging applications. Antibody use should be optimized by the end user for each application and assay.

Storage

Storage:
Store at -80°C.
Storage Buffer:
PBS Only

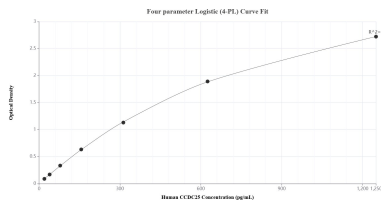
For technical support and original validation data for this product please contact:

T: 1 (888) 4PTGLAB (1-888-478-4522) (toll free in USA), or 1(312) 455-8498 (outside USA)

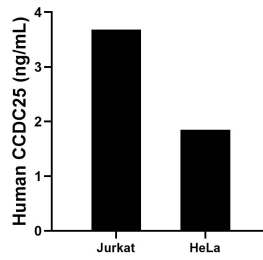
E: proteintech@ptglab.com
W: ptglab.com

This product is exclusively available under Proteintech Group brand and is not available to purchase from any other manufacturer.

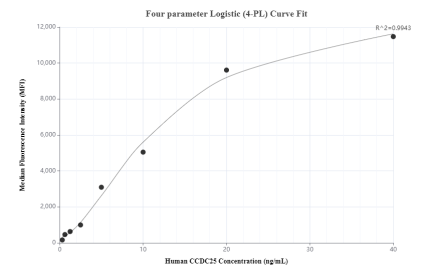
Selected Validation Data



Sandwich ELISA standard curve of MP01321-3, Human CCDC25 Recombinant Matched Antibody Pair - PBS only. 84484-2-PBS was coated to a plate as the capture antibody and incubated with serial dilutions of standard Ag15593. 84484-1-PBS was HRP conjugated as the detection antibody. Range: 19.5-1250 pg/mL



The mean CCDC25 concentration was determined to be 3.7 ng/mL in Jurkat cell extract based on a 4.2 mg/mL extract load and 1.9 ng/mL in HeLa cell extract based on a 1.3 mg/mL extract load.



Cytometric bead array standard curve of MP01321-1, CCDC25 Recombinant Matched Antibody Pair, PBS Only. Capture antibody: 84484-2-PBS. Detection antibody: 84484-3-PBS. Standard: Ag15593. Range: 0.313-40 ng/mL