

For Research Use Only

# GSR Recombinant antibody

Catalog Number: 84480-2-RR



## Basic Information

|  |  |   |
|--|--|---|
| <b>Catalog Number:</b><br>84480-2-RR                           | <b>GenBank Accession Number:</b><br>BC069244 | <b>Purification Method:</b><br>Protein A purification                     |
| <b>Size:</b><br>100ul , Concentration: 1000 µg/ml by Nanodrop; | <b>GeneID (NCBI):</b><br>2936                | <b>CloneNo.:</b><br>241934D2  |
| <b>Source:</b><br>Rabbit                                       | <b>UNIPROT ID:</b><br>P00390                 | <b>Recommended Dilutions:</b><br>WB 1:2000-1:10000<br>IF/ICC 1:250-1:1000 |
| <b>Isotype:</b><br>IgG   | <b>Full Name:</b><br>glutathione reductase   |   |
| <b>Immunogen Catalog Number:</b><br>AG13080                    | <b>Calculated MW:</b><br>522 aa, 56 kDa      |   |
|  | <b>Observed MW:</b><br>52-55 kDa             |   |

## Applications

|  |  |
|--|--|
| <b>Tested Applications:</b><br>WB, IF/ICC, ELISA | <b>Positive Controls:</b>  |
| <b>Species Specificity:</b><br>human, mouse      | <b>WB :</b> A549 cells, Jurkat cells, HeLa cells, mouse testis tissue<br><b>IF/ICC :</b> HeLa cells, |

## Background Information

GSR(Glutathione reductase) is also named as GLUR, GRD1 and belongs to the class-I pyridine nucleotide-disulfide oxidoreductase family.It was first found in a black American a variant red cell GSR characterized by greater electrophoretic mobility and enzyme activity per unit of hemoglobin than the normal.This protein maintains high levels of reduced glutathione in the cytosol.It has 5 isoforms produced by alternative splicing and alternative initiation.

## Storage

**Storage:**  
Store at -20°C. Stable for one year after shipment.  
**Storage Buffer:**  
PBS with 0.02% sodium azide and 50% glycerol pH 7.3.  
**Aliquoting is unnecessary for -20°C storage**

\*\*\* 20ul sizes contain 0.1% BSA

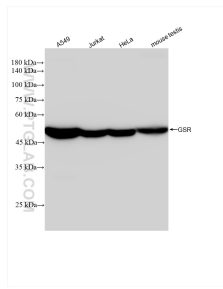
For technical support and original validation data for this product please contact:

T: 1 (888) 4PTGLAB (1-888-478-4522) (toll free in USA), or 1(312) 455-8498 (outside USA)

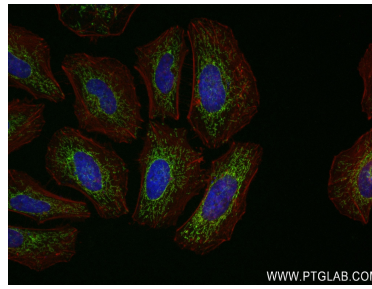
E: [proteintech@ptglab.com](mailto:proteintech@ptglab.com)  
W: [ptglab.com](http://ptglab.com)

**This product is exclusively available under Proteintech Group brand and is not available to purchase from any other manufacturer.**

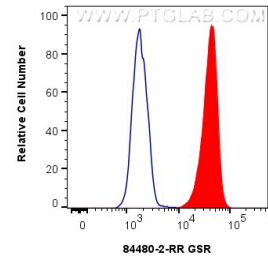
## Selected Validation Data



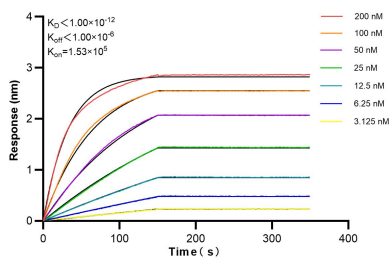
Various lysates were subjected to SDS PAGE followed by western blot with 84480-2-RR (GSR antibody) at dilution of 1:5000 incubated at room temperature for 1.5 hours.



Immunofluorescent analysis of (4% PFA) fixed HeLa cells using GSR antibody (84480-2-RR, Clone: 241934D2) at dilution of 1:500 and CoraLite® 488-Conjugated Goat Anti-Rabbit IgG(H+L) (SA00013-2), CL594-Phalloidin (red).



1x10<sup>6</sup> HeLa cells were intracellularly stained with 0.25 ug GSR Recombinant antibody (84480-2-RR, Clone: 241934D2) and CoraLite® 488-Conjugated Goat Anti-Rabbit IgG(H+L) (SA00013-2)(red), or 0.25 ug Rabbit IgG Isotype Control RecAb (98136-1-RR, Clone: 240953C9) (blue). Cells were fixed with 4% PFA and permeabilized with Flow Cytometry Perm Buffer (PF00011-C).



Biolayer interferometry (BLI) kinetic assays of 84480-2-RR against Human GSR were performed. The affinity constant is below 1 pM.