

For Research Use Only

# GSR Recombinant antibody, PBS Only (Capture)

Catalog Number: 84480-2-PBS



## Basic Information

<b>Catalog Number:</b> 84480-2-PBS	<b>GenBank Accession Number:</b> BC069244	<b>Purification Method:</b> Protein A purification
<b>Size:</b> 100ug, Concentration: 1 mg/ml by Nanodrop;	<b>GeneID (NCBI):</b> 2936	<b>CloneNo.:</b> 241934D2
<b>Source:</b> Rabbit	<b>UNIPROT ID:</b> P00390	
<b>Isotype:</b> IgG	<b>Full Name:</b> glutathione reductase	
<b>Immunogen Catalog Number:</b> AG13080	<b>Calculated MW:</b> 522 aa, 56 kDa	
	<b>Observed MW:</b> 52-55 kDa	

## Applications

**Tested Applications:**  
WB, IF/ICC, FC (Intra), Cytometric bead array, Indirect ELISA

**Species Specificity:**  
human, mouse

## Product Information

84480-2-PBS targets GSR as part of a matched antibody pair:

MP01316-1: 84480-2-PBS capture and 84480-1-PBS detection (validated in Cytometric bead array)

MP01316-2: 84480-2-PBS capture and 84480-3-PBS detection (validated in Cytometric bead array)

Unconjugated rabbit recombinant monoclonal antibody in PBS only (BSA and azide free) storage buffer at a concentration of 1 mg/mL, ready for conjugation. Created using Proteintech's proprietary in-house recombinant technology. Recombinant production enables unrivalled batch-to-batch consistency, easy scale-up, and future security of supply.

This conjugation ready format makes antibodies ideal for use in many applications including: ELISAs, multiplex assays requiring matched pairs, mass cytometry, and multiplex imaging applications. Antibody use should be optimized by the end user for each application and assay.

## Background Information

GSR (Glutathione reductase) is also named as GLUR, GRD1 and belongs to the class-I pyridine nucleotide-disulfide oxidoreductase family. It was first found in a black American variant red cell GSR characterized by greater electrophoretic mobility and enzyme activity per unit of hemoglobin than the normal. This protein maintains high levels of reduced glutathione in the cytosol. It has 5 isoforms produced by alternative splicing and alternative initiation.

## Storage

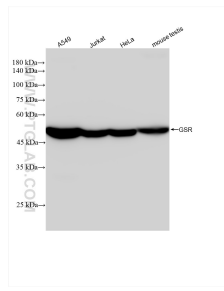
**Storage:**  
Store at -80°C.

**Storage Buffer:**  
PBS Only

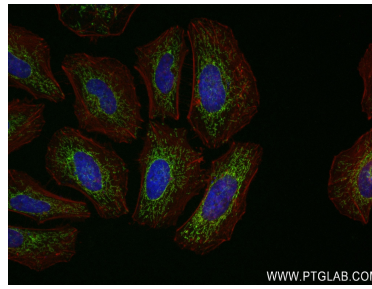
For technical support and original validation data for this product please contact:  
T: 1 (888) 4PTGLAB (1-888-478-4522) (toll free in USA), or 1(312) 455-8498 (outside USA) E: proteintech@ptglab.com W: ptglab.com

This product is exclusively available under Proteintech Group brand and is not available to purchase from any other manufacturer.

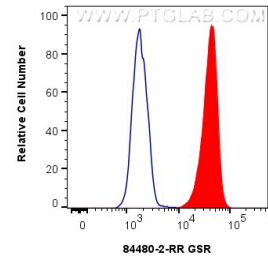
## Selected Validation Data



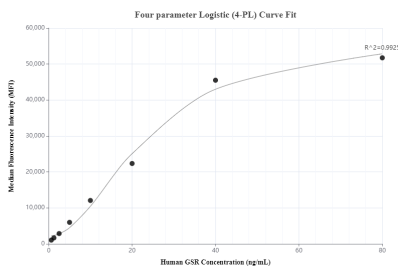
Various lysates were subjected to SDS PAGE followed by western blot with 84480-2-RR (GSR antibody) at dilution of 1:5000 incubated at room temperature for 1.5 hours. This data was developed using the same antibody clone with 84480-2-PBS in a different storage buffer formulation.



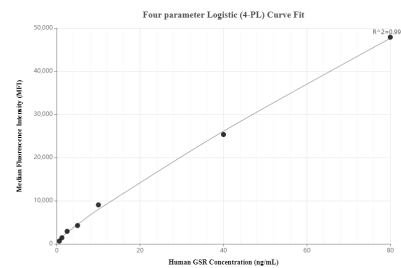
Immunofluorescent analysis of (4% PFA) fixed HeLa cells using GSR antibody (84480-2-RR, Clone: 241934D2) at dilution of 1:500 and CoraLite® 488-Conjugated Goat Anti-Rabbit IgG(H+L) (SA00013-2), CL594-Phalloidin (red). This data was developed using the same antibody clone with 84480-2-PBS in a different storage buffer formulation.



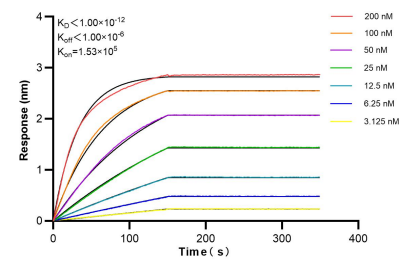
$1 \times 10^6$  HeLa cells were intracellularly stained with 0.25 ug GSR Recombinant antibody (84480-2-RR, Clone:241934D2) and CoraLite® 488-Conjugated Goat Anti-Rabbit IgG(H+L) (SA00013-2)(red), or 0.25 ug Rabbit IgG Isotype Control RecAb (98136-1-RR, Clone: 240953C9) (blue). Cells were fixed with 4% PFA and permeabilized with Flow Cytometry Perm Buffer (PF00011-C). This data was developed using the same antibody clone with 84480-2-PBS in a



Cytometric bead array standard curve of MP01316-1, GSR Recombinant Matched Antibody Pair, PBS Only. Capture antibody: 84480-2-PBS. Detection antibody: 84480-1-PBS. Standard: Ag13080. Range: 0.625-80 ng/mL



Cytometric bead array standard curve of MP01316-2, GSR Recombinant Matched Antibody Pair, PBS Only. Capture antibody: 84480-2-PBS. Detection antibody: 84480-3-PBS. Standard: Ag13080. Range: 0.625-80 ng/mL



Bi-layer interferometry (BLI) kinetic assays of 84480-2-RR against Human GSR were performed. The affinity constant is below 1 pM.