

For Research Use Only

CSF1R Recombinant antibody, PBS Only (Capture/Detector)

Catalog Number: 84477-4-PBS



Basic Information

Catalog Number: 84477-4-PBS	GenBank Accession Number: BC047521	Purification Method: Protein A purification
Size: 100ug, Concentration: 1 mg/ml by Nanodrop;	GeneID (NCBI): 1436	CloneNo.: 241675G3
Source: Rabbit	UNIPROT ID: P07333	
Isotype: IgG	Full Name: colony stimulating factor 1 receptor	
	Calculated MW: 972 aa, 108 kDa	

Applications

Tested Applications:
Cytometric bead array, Sandwich ELISA, Indirect ELISA,
Sample test

Species Specificity:
human

Product Information

84477-4-PBS targets CSF1R as part of a matched antibody pair.

MP01340-2: 84477-4-PBS capture and 84477-1-PBS detection (validated in Cytometric bead array)

MP01340-3: 84477-4-PBS capture and 84477-2-PBS detection (validated in Cytometric bead array)

MP01340-4: 84477-5-PBS capture and 84477-4-PBS detection (validated in Sandwich ELISA)

Unconjugated rabbit recombinant monoclonal antibody in PBS only (BSA and azide free) storage buffer at a concentration of 1 mg/mL, ready for conjugation. Created using Proteintech's proprietary in-house recombinant technology. Recombinant production enables unrivalled batch-to-batch consistency, easy scale-up, and future security of supply.

This conjugation ready format makes antibodies ideal for use in many applications including: ELISAs, multiplex assays requiring matched pairs, mass cytometry, and multiplex imaging applications. Antibody use should be optimized by the end user for each application and assay.

Storage

Storage:
Store at -80°C.

Storage Buffer:
PBS Only

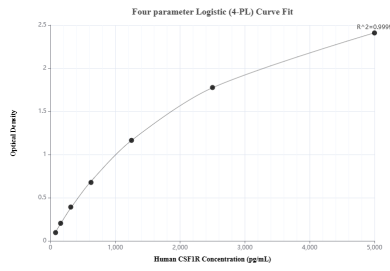
For technical support and original validation data for this product please contact:

T: 1 (888) 4PTGLAB (1-888-478-4522) (toll free
in USA), or 1(312) 455-8498 (outside USA)

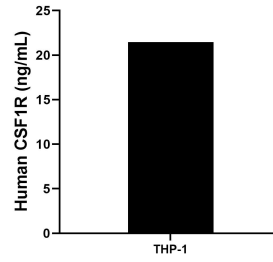
E: proteintech@ptglab.com
W: ptglab.com

This product is exclusively available under Proteintech Group brand and is not available to purchase from any other manufacturer.

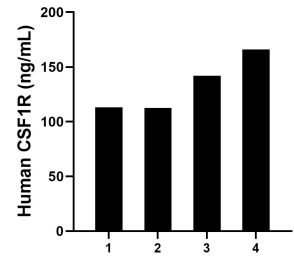
Selected Validation Data



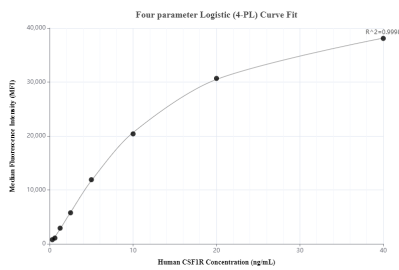
Sandwich ELISA standard curve of MP01340-4, Human CSF1R Recombinant Matched Antibody Pair - PBS only. 84477-5-PBS was coated to a plate as the capture antibody and incubated with serial dilutions of standard RP00001. 84477-4-PBS was HRP conjugated as the detection antibody. Range: 78.1-5000 pg/mL



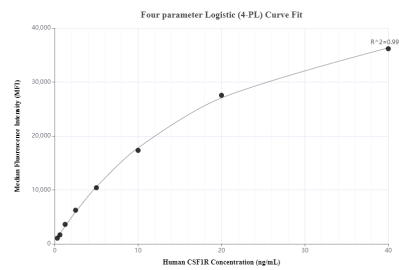
The mean CSF1R concentration was determined to be 21.46 ng/mL in THP-1 cell extract based on a 4.8 mg/mL extract load.



Serum of four individual healthy human donors was measured. The human CSF1R concentration of detected samples was determined to be 133.41 ng/mL with a range of 112.57 - 165.97 ng/mL



Cytometric bead array standard curve of MP01340-2, CSF1R Recombinant Matched Antibody Pair, PBS Only. Capture antibody: 84477-4-PBS. Detection antibody: 84477-1-PBS. Standard: RP00001. Range: 0.313-40 ng/mL



Cytometric bead array standard curve of MP01340-3, CSF1R Recombinant Matched Antibody Pair, PBS Only. Capture antibody: 84477-4-PBS. Detection antibody: 84477-2-PBS. Standard: CSF1R. Range: 0.313-40 ng/mL