

For Research Use Only

# CD107b / LAMP2 Recombinant antibody

Catalog Number: 84474-5-RR



## Basic Information

|  |  |  |
|--|--|--|
| <b>Catalog Number:</b><br>84474-5-RR                           | <b>GenBank Accession Number:</b><br>NM_001017959.2           | <b>Purification Method:</b><br>Protein A purification  |
| <b>Size:</b><br>100ul , Concentration: 1000 µg/ml by Nanodrop; | <b>GeneID (NCBI):</b><br>16784                               | <b>CloneNo.:</b><br>241893A7   |
| <b>Source:</b><br>Rabbit                                       | <b>UNIPROT ID:</b><br>P17047-1                               | <b>Recommended Dilutions:</b><br>WB 1:5000-1:50000<br>IHC 1:500-1:2000<br>IF/ICC 1:200-1:800 |
| <b>Isotype:</b><br>IgG   | <b>Full Name:</b><br>lysosomal-associated membrane protein 2 |  |
|  | <b>Calculated MW:</b><br>46 kDa                              |  |
|  | <b>Observed MW:</b><br>90-110 kDa                            |  |

## Applications

**Tested Applications:**  
WB, IHC, IF/ICC, ELISA

**Species Specificity:**  
mouse

**Note-IHC: suggested antigen retrieval with TE buffer pH 9.0; (\*) Alternatively, antigen retrieval may be performed with citrate buffer pH 6.0**

**Positive Controls:**

**WB:** NIH/3T3 cells, RAW 264.7 cells, mouse kidney tissue

**IHC:** mouse liver tissue,

**IF/ICC:** NIH/3T3 cells,

## Background Information

LAMP2 (CD107b) is a Lysosomal membrane glycoprotein. LAMP2 is extensively glycosylated with asparagine-linked oligosaccharides which protect it from intracellular proteolysis (PMID: 10521503). Although LAMP-2 is localized primarily in the endosome-lysosomal membrane of cells, it is also found on the plasma membrane under certain circumstances, e.g., after platelet activation, during granulocytic differentiation and activation, and in some tumor cells (PMID: 12221139). LAMP is involved in lysosomal stability and autophagy (PMID: 12221139). This glycoprotein provides selectins with carbohydrate ligands. LAMP2 may play a role in tumor cell metastasis (PMID 9426697).

## Storage

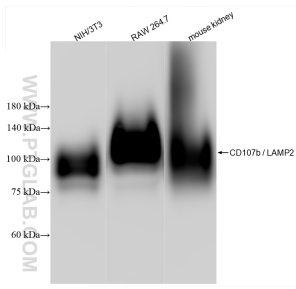
**Storage:**  
Store at -20°C. Stable for one year after shipment.  
**Storage Buffer:**  
PBS with 0.02% sodium azide and 50% glycerol pH 7.3.  
Aliquoting is unnecessary for -20°C storage

\*\*\* 20ul sizes contain 0.1% BSA

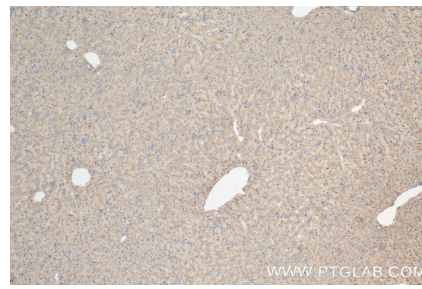
For technical support and original validation data for this product please contact:  
T: 1 (888) 4PTGLAB (1-888-478-4522) (toll free in USA), or 1(312) 455-8498 (outside USA)  
E: proteintech@ptglab.com  
W: ptglab.com

This product is exclusively available under Proteintech Group brand and is not available to purchase from any other manufacturer.

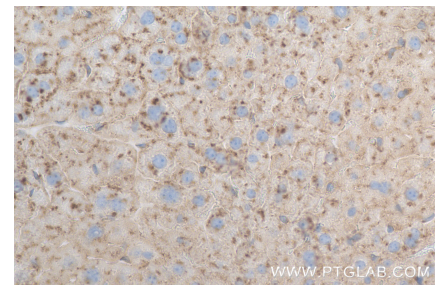
## Selected Validation Data



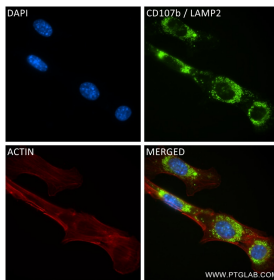
Various lysates were subjected to SDS PAGE followed by western blot with 84474-5-RR (CD107b / LAMP2 antibody) at dilution of 1:10000 incubated at room temperature for 1.5 hours.



Immunohistochemical analysis of paraffin-embedded mouse liver tissue slide using 84474-5-RR (CD107b / LAMP2 antibody) at dilution of 1:1000 (under 10x lens). Heat mediated antigen retrieval with Tris-EDTA buffer (pH 9.0).



Immunohistochemical analysis of paraffin-embedded mouse liver tissue slide using 84474-5-RR (CD107b / LAMP2 antibody) at dilution of 1:1000 (under 40x lens). Heat mediated antigen retrieval with Tris-EDTA buffer (pH 9.0).



Immunofluorescent analysis of (4% PFA) fixed NIH/3T3 cells using CD107b / LAMP2 antibody (84474-5-RR, Clone: 241893A7) at dilution of 1:400 and CoraLite®488-Conjugated Goat Anti-Rabbit IgG(H+L) (SA00013-2), CL594-Phalloidin (red).